

(Valdemarín)

Ref: ONM2403002



Detached new build villas in Valdemarín

LAST UNITS! Residential development made up of unique villas located on private plots of up to 2,500 square metres in one of the most exclusive areas of Madrid. Nine exclusive individual villas distributed on a single floor, with swimming pool, garden and spacious rooms that flow and communicate with each other. A project of enormous quality and attractiveness where comfort is a priority, resulting in homes that stand out for their functionality, versatility and excellence. Spaces, volumes and noble materials combine to provide the complex with the highest standards of quality and efficiency. The work of the prestigious international studio Bueso - Inchausti & Rein Arquitectos, we are talking about properties that are authentic masterpieces of contemporary architecture. This development is one of the most select traditional enclaves in Madrid, a privileged setting away from the hustle and bustle of the city centre, but close to all that the capital has to offer. An exclusive area surrounded by green areas and a growing gastronomic and leisure offer. In addition, Valdemarín is highly valued for its proximity to first class educational centres, the best hospitals in th [...]

Aravaca / Valdemarín

Unit pr B

Completion Q4 2024

FEATURES

Surface 680 m² / 1,500 m² terrace

6 Rooms

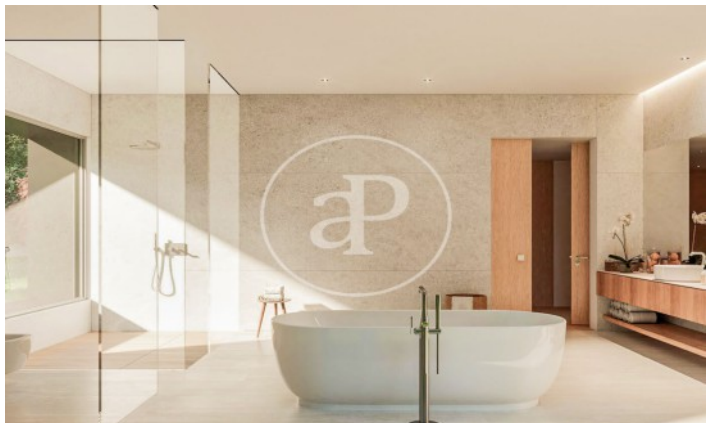
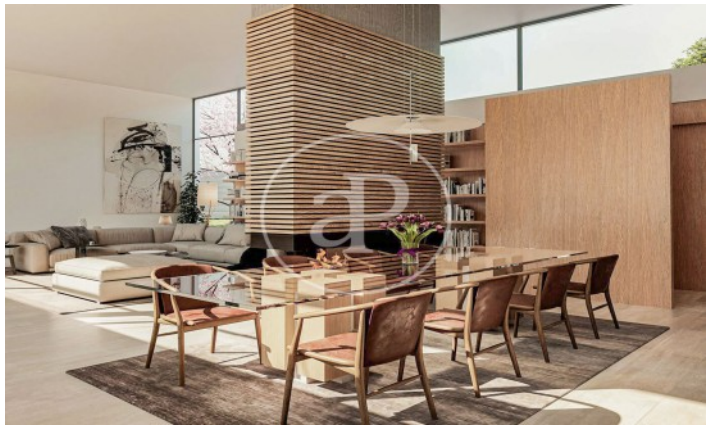
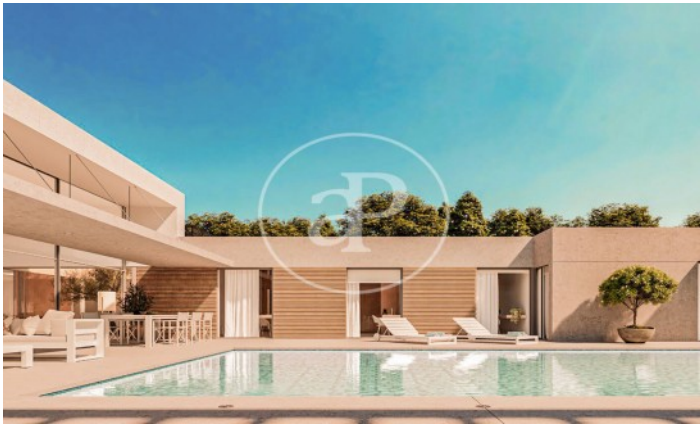
6 Toilets

- ✓ Views
- ✓ Heating
- ✓ Boxroom
- ✓ AACC
- ✓ Terrace
- ✓ Backyard
- ✓ Pool
- ✓ Has parking

Price 4,400,000 €

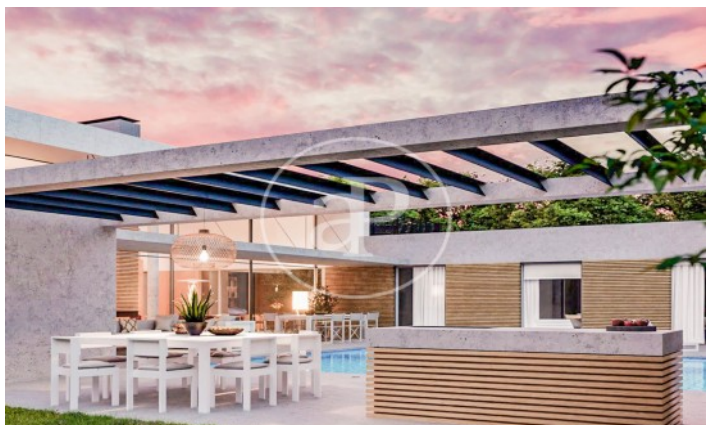
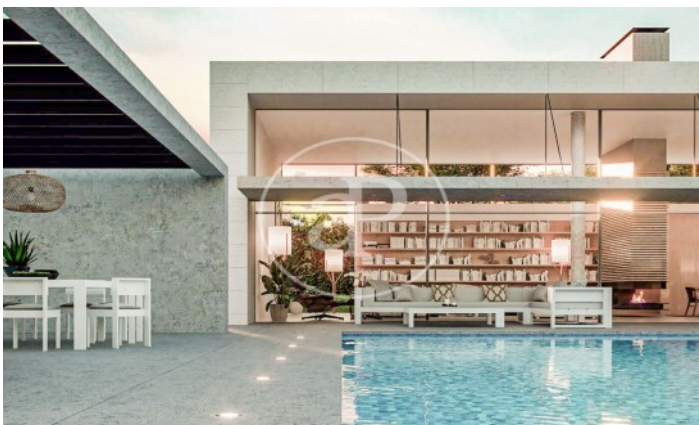
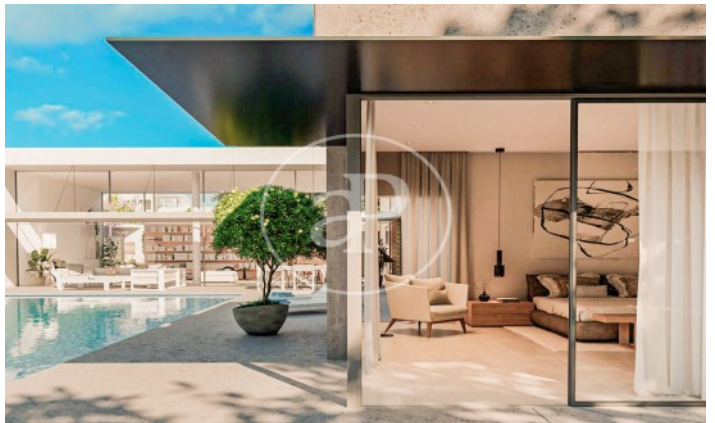
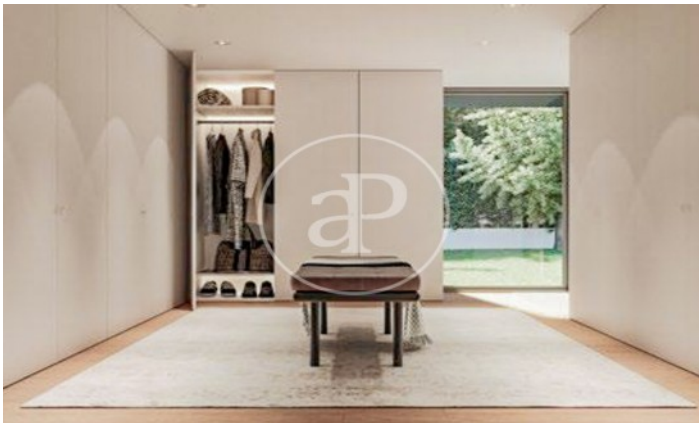
(Valdemarín)

Ref: ONM2403002



(Valdemarín)

Ref: ONM2403002



(Valdemarín)

Ref: ONM2403002



The information about any property is not binding to any offer or contract. Any verbal or written declaration made by aProperties with regards to the value or condition of the property should not be considered accurate or factual. The pictures make reference to some parts of the property at the times that they were taken. The areas, dimensions and distances that are given are approximate and should be checked by the client. The images are computer generated and are just an approximate indication of the real appearance of the property; these may change at any time. The information with regards to the property may also change at any time.

Contact us today for more information or to arrange a viewing

Tel: 91 800 54 65

apropertiesmadrid@aproperties.es

<https://www.aproperties.es>