

(Valdemarín)

Ref: ONM2306001



New development for sale in Valdemarín.

NEW DEVELOPMENT WITH TERRACE AND GARDEN IN VALDEMARÍN. We present an incredible new development in a private urbanisation. The development has 24 homes with 3 or 4 bedrooms with porch, garden and terraces where comfort and lifestyle merge in every detail. The location in Valdemarín offers a privileged setting with excellent transport links, nearby amenities and a peaceful and safe environment in which to live. Each home has been carefully designed and built with high quality materials, guaranteeing a luxurious standard in every space. Kitchens equipped with state-of-the-art appliances, where you can give free rein to your culinary passion. Forget about parking worries with your own private garage, with capacity for 3 cars. Enjoy comfort and security for your vehicle. The homes are equipped with aerothermal heating, cooling and hot water systems, providing energy efficiency and comfort all year round. In addition, there is energy support by fan coil in the living room, for individualised temperature control. The development offers a wide variety of communal areas for your enjoyment and relaxation: Swimming pool to cool off during sunny days and relax in a quiet [...]

Aravaca / Valdemarín

Unit pr 15

Completion Q4 2025

FEATURES

Surface 324 m² / 80 m² terrace

3 Rooms

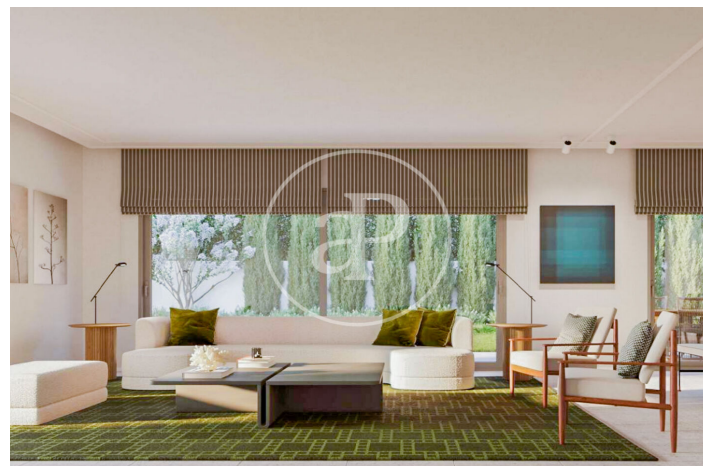
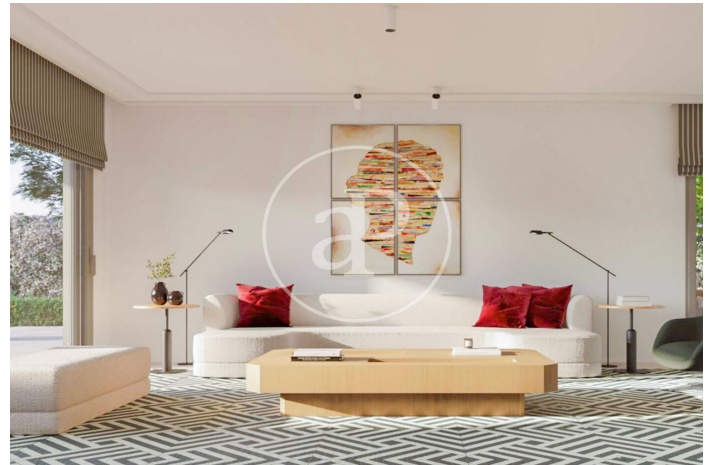
2 Toilets 1 Restrooms

- ✓ Views
- ✓ Heating
- ✓ Boxroom
- ✓ AACC
- ✓ Terrace
- ✓ Backyard
- ✓ Pool
- ✓ Gym
- ✓ Security
- ✓ Concierge
- ✓ Has parking

Price 1,831,000 €

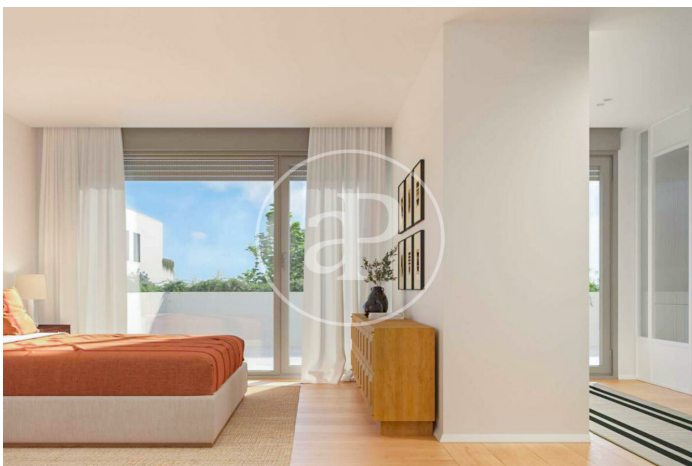
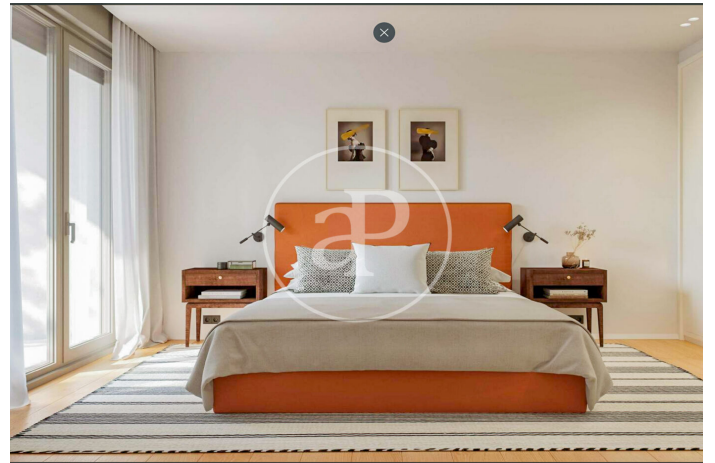
(Valdemarín)

Ref: ONM2306001



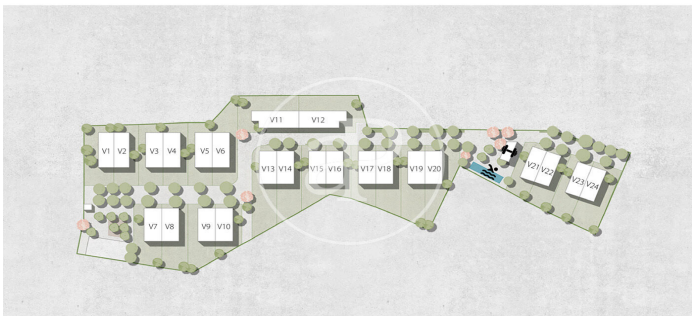
(Valdemarín)

Ref: ONM2306001



(Valdemarín)

Ref: ONM2306001



The information about any property is not binding to any offer or contract. Any verbal or written declaration made by aProperties with regards to the value or condition of the property should not be considered accurate or factual. The pictures make reference to some parts of the property at the times that they were taken. The areas, dimensions and distances that are given are approximate and should be checked by the client. The images are computer generated and are just an approximate indication of the real appearance of the property; these may change at any time. The information with regards to the property may also change at any time.

Contact us today for more information or to arrange a viewing

Tel: 91 800 54 65 apropertiesmadrid@aproperties.es <https://www.aproperties.es>