

(Valdemarín)

Ref: ONM2309003



### *New development for sale in Valdemarín.*

Are you looking for the epitome of elegance and sophistication in your next home? We present a unique opportunity for those who demand the very best in every detail. Renowned architects Joaquín Torres and Rafael Llamazares, of the prestigious A-CERO studio, have created four exclusive dream villas in the desirable area of Valdemarín. Each of these villas redefines luxury living with their exceptional features: Spaciousness and Elegance: With 767 m<sup>2</sup> of living space, these residences offer a spacious and bright ambience. Experience the grandeur of double height ceilings that will take your breath away from the moment you enter. Dreamlike Outdoor Spaces: Enjoy the outdoors on your own covered terraces and private pool, designed for relaxation and outdoor entertaining. The 2500 m<sup>2</sup> plots give you privacy and space to enjoy with your family. Panoramic Views: Take in breathtaking views of the Pardo, connecting you with the natural beauty of the area as you relax in your own personal retreat. Art in Every Corner: Every detail of these homes has been carefully designed to be a work of art in its own right. High-end finishes and attention to detail elevate the co [...]

Aravaca / Valdemarín

Unit pr  
Completion Q1 2026

#### **FEATURES**

Surface 781 m<sup>2</sup> / 98 m<sup>2</sup> terrace  
6 Rooms  
6 Toilets 1 Restrooms

- ✓ Views
- ✓ Heating
- ✓ Boxroom
- ✓ AACC
- ✓ Terrace
- ✓ Backyard
- ✓ Pool
- ✓ Gym
- ✓ Security
- ✓ Has parking

Price 3,450,000 €

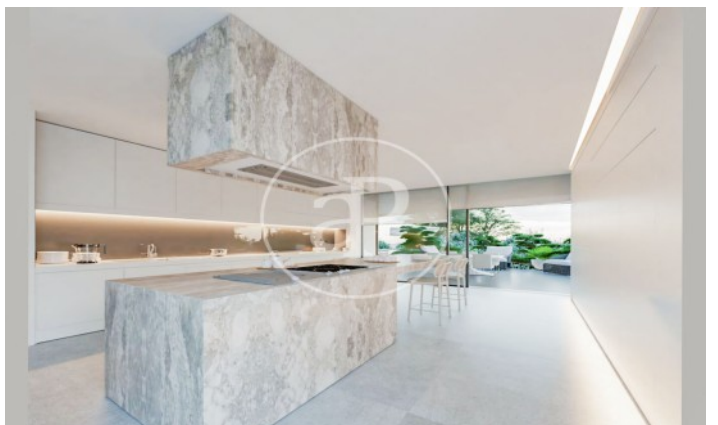
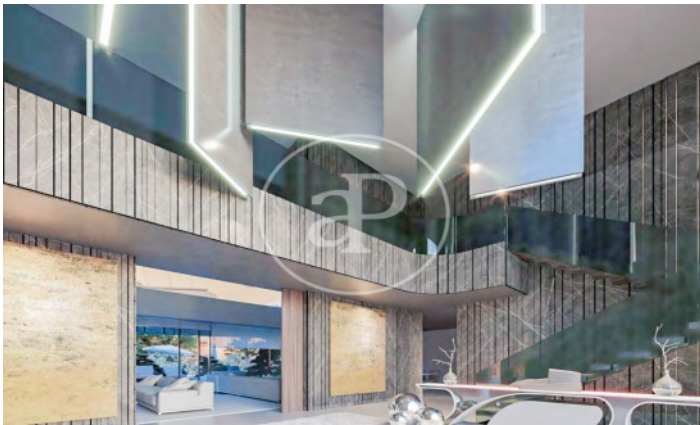
(Valdemarín)

Ref: ONM2309003



(Valdemarín)

Ref: ONM2309003



(Valdemarín)

Ref: ONM2309003



The information about any property is not binding to any offer or contract. Any verbal or written declaration made by aProperties with regards to the value or condition of the property should not be considered accurate or factual. The pictures make reference to some parts of the property at the times that they were taken. The areas, dimensions and distances that are given are approximate and should be checked by the client. The images are computer generated and are just an approximate indication of the real appearance of the property; these may change at any time. The information with regards to the property may also change at any time.

Contact us today for more information or to arrange a viewing

Tel: 91 800 54 65

[apropertiesmadrid@aproperties.es](mailto:apropertiesmadrid@aproperties.es)

<https://www.aproperties.es>