

(Badalona)

Ref: ONB2306002



## *New Developments in Badalona - Residencial Marenostrum*

Marenostrum is a new development of 206 homes with 2, 3 and 4 bedrooms. The common areas are exceptional, two communal swimming pools and a playground ideal to merge with the tranquility that breathes in an environment that will surprise you. The residential complex is located next to the Badalona Port Canal and has spectacular private terraces with views over the Mediterranean coastline. The location is exceptional, just 3 km from Barcelona and with direct access to the best beaches in the area. It stands on the coast of the Mediterranean Sea and is considered the gateway to the coastal region of Maresme. It is only 30 minutes by car from the capital and the Prat Airport, close to the center of Badalona, with all the essential services, sports and cultural facilities you will need for your new day to day life.

Badalona  
Unit 1 C F3B  
Completion Q2 2025

### **FEATURES**

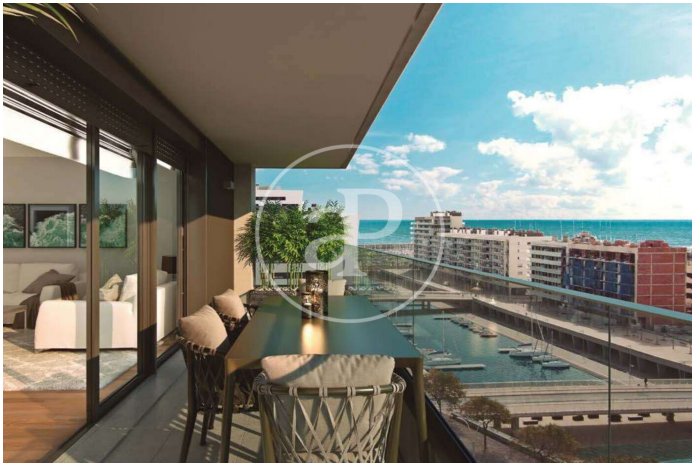
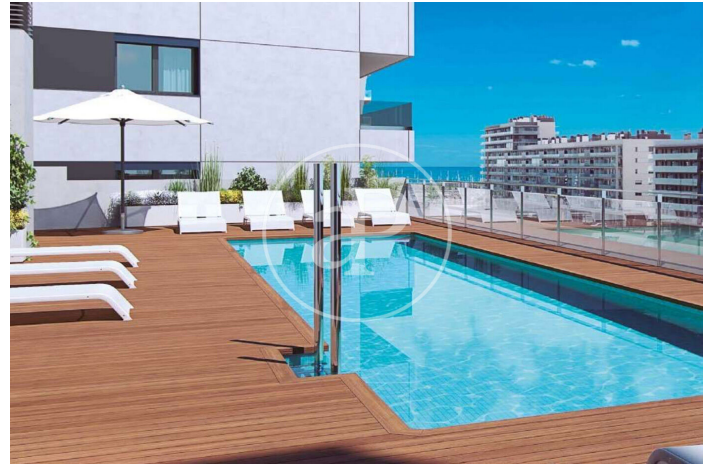
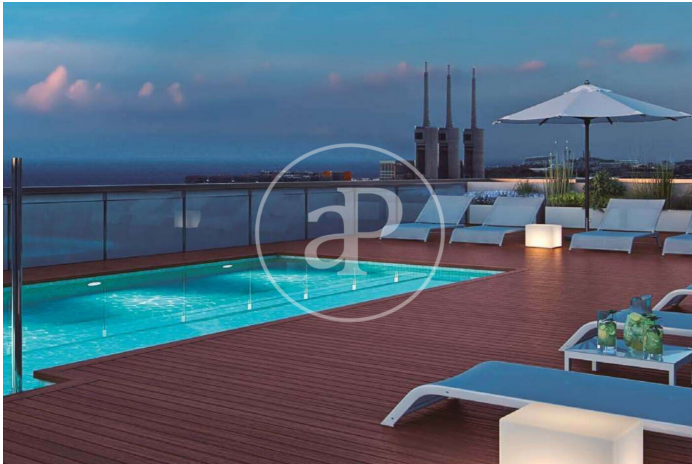
Surface 120 m<sup>2</sup> / 32 m<sup>2</sup> terrace  
3 Rooms  
2 Toilets

- ✓ Views
- ✓ Heating
- ✓ Boxroom
- ✓ AACC
- ✓ Terrace
- ✓ Pool
- ✓ Lift
- ✓ Has parking

Price 619,000 €

(Badalona)

Ref: ONB2306002



(Badalona)

Ref: ONB2306002



<b>VIVIENDAS TIPO 3 DORMITORIOS</b> <b>STANDARD 3 BEDROOM HOME</b>	
Superficie Construida Interior	92,13 m <sup>2</sup>
Floor area (interior)	92,13 m <sup>2</sup>
Superficie Construida Exterior	15,54 m <sup>2</sup>
Floor area (exterior)	15,54 m <sup>2</sup>
<b>Total Superficie Construida</b>	<b>107,67 m<sup>2</sup></b>
<b>Total floor area</b>	<b>107,67 m<sup>2</sup></b>

\*\*Plano informativo, susceptible de ser modificado por necesidades técnicas o de arquitectura. Superficies orientativas.  
\*\*This floor plan is for illustrative purposes only and may be subject to change for technical or architectural reasons. Floor areas are for guidance only.



<b>VIVIENDAS TIPO 4 DORMITORIOS</b> <b>STANDARD 4 BEDROOM HOME</b>	
Superficie Construida Interior	125,44 m <sup>2</sup>
Floor area (interior)	125,44 m <sup>2</sup>
Superficie Construida Exterior	13,23 m <sup>2</sup>
Floor area (exterior)	13,23 m <sup>2</sup>
<b>Total Superficie Construida</b>	<b>138,67 m<sup>2</sup></b>
<b>Total floor area</b>	<b>138,67 m<sup>2</sup></b>

\*\*Plano informativo, susceptible de ser modificado por necesidades técnicas o de arquitectura. Superficies orientativas.  
\*\*This floor plan is for illustrative purposes only and may be subject to change for technical or architectural reasons. Floor areas are for guidance only.



<b>VIVIENDAS TIPO 2 DORMITORIOS</b> <b>STANDARD 2 BEDROOM HOME</b>	
Superficie Construida Interior	81,80 m <sup>2</sup>
Floor area (interior)	81,80 m <sup>2</sup>
Superficie Construida Exterior	11,98 m <sup>2</sup>
Floor area (exterior)	11,98 m <sup>2</sup>
<b>Total Superficie Construida</b>	<b>93,78 m<sup>2</sup></b>
<b>Total floor area</b>	<b>93,78 m<sup>2</sup></b>

\*\*Plano informativo, susceptible de ser modificado por necesidades técnicas o de arquitectura. Superficies orientativas.  
\*\*This floor plan is for illustrative purposes only and may be subject to change for technical or architectural reasons. Floor areas are for guidance only.

The information about any property is not binding to any offer or contract. Any verbal or written declaration made by aProperties with regards to the value or condition of the property should not be considered accurate or factual. The pictures make reference to some parts of the property at the times that they were taken. The areas, dimensions and distances that are given are approximate and should be checked by the client. The images are computer generated and are just an approximate indication of the real appearance of the property; these may change at any time. The information with regards to the property may also change at any time.

Contact us today for more information or to arrange a viewing

Tel: 93 528 89 08 [apropertiesbarcelona@aproperties.es](mailto:apropertiesbarcelona@aproperties.es) <https://www.aproperties.es>