

(Diagonal Mar)

Ref: ONB2407005



## *Spectacular New Build Promotion in Sant Martí*

Spectacular new build homes located in the Sant Martí district, Barcelona, where you will find 2 and 3 bedroom homes with spacious, bright, and cozy interiors. They include a parking space in the price. Each home features spacious terraces connected to the living room, allowing abundant natural light to create a warm and welcoming atmosphere. Enjoy the incredible common areas, which include a pool, gym, coworking space, relaxation area, and a multipurpose room adaptable to your needs, all designed to enhance your quality of life. It is in an exceptional location with direct access to La Pau metro (L2 and L4) and an extensive bus network that brings you to the center and beaches of Barcelona in just 15 minutes. Additionally, you will be close to the Ronda Litoral and Rambla Guipúzcoa, making your daily commutes easier. With a developed infrastructure that includes schools, medical centers, pharmacies, supermarkets, and more, you will have everything you need within reach for a practical and hassle-free life. Each home is equipped with appliances and LED lights, providing you with comfort from day one. With an A energy rating and eco-efficient features.

Barcelona / Diagonal Mar

Unit 8 12

Completion Q2 2024

### **FEATURES**

Surface 90 m<sup>2</sup> / 37 m<sup>2</sup> terrace

3 Rooms

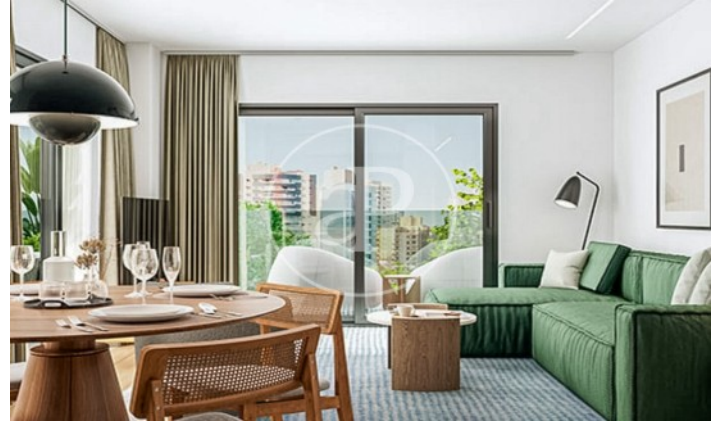
2 Toilets

- ✓ Views
- ✓ Heating
- ✓ Boxroom
- ✓ AACC
- ✓ Terrace
- ✓ Backyard
- ✓ Pool
- ✓ Gym
- ✓ Lift
- ✓ Security
- ✓ Concierge
- ✓ Has parking

Price 528,000 €

(Diagonal Mar)

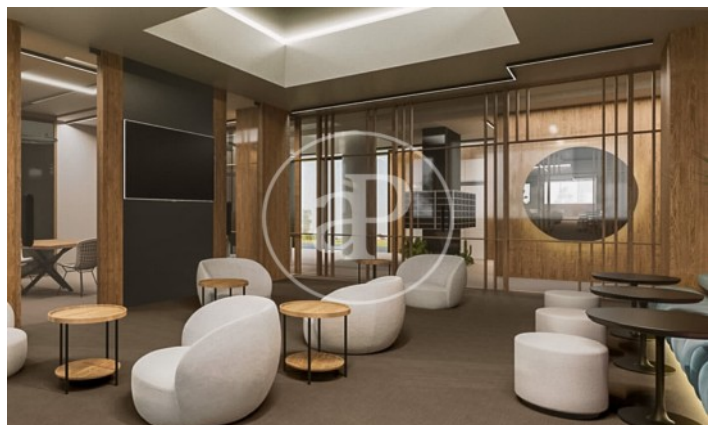
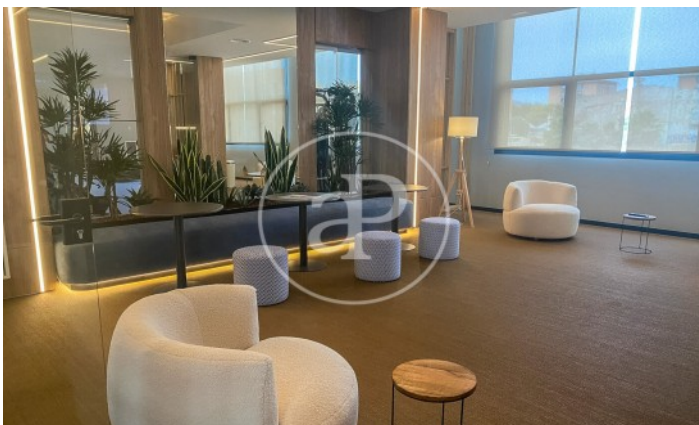
Ref: ONB2407005





(Diagonal Mar)

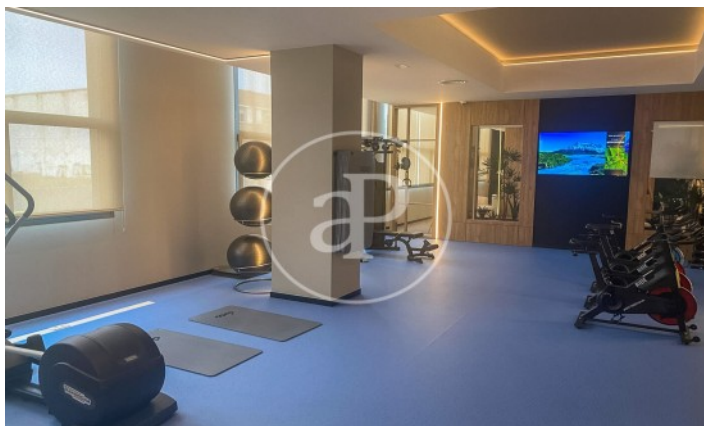
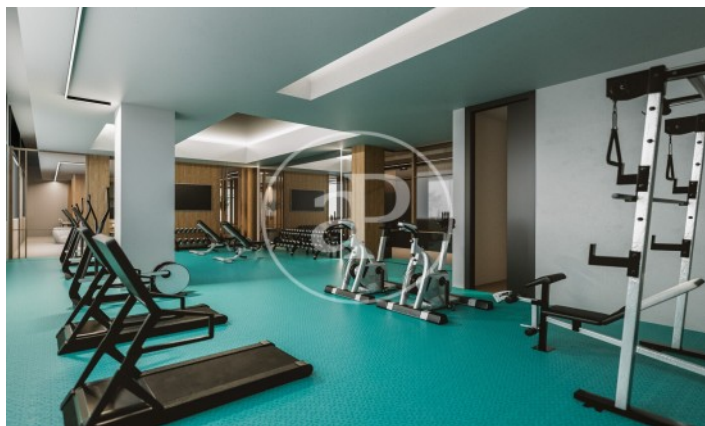
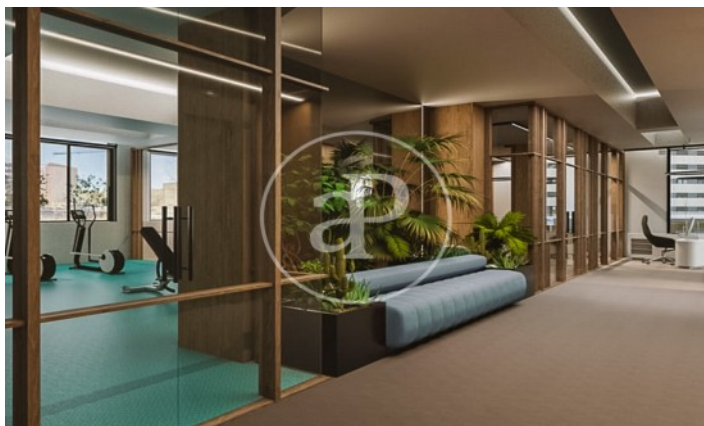
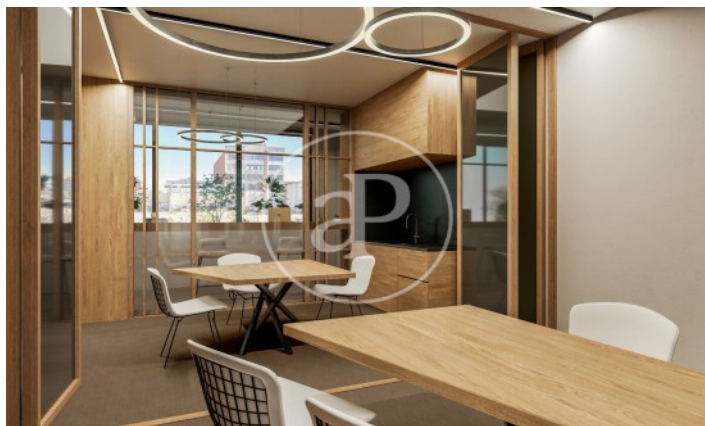
Ref: ONB2407005





(Diagonal Mar)

Ref: ONB2407005



The information about any property is not binding to any offer or contract. Any verbal or written declaration made by aProperties with regards to the value or condition of the property should not be considered accurate or factual. The pictures make reference to some parts of the property at the times that they were taken. The areas, dimensions and distances that are given are approximate and should be checked by the client. The images are computer generated and are just an approximate indication of the real appearance of the property; these may change at any time. The information with regards to the property may also change at any time.

Contact us today for more information or to arrange a viewing

Tel: 93 528 89 08

[apropertiesbarcelona@aproperties.es](mailto:apropertiesbarcelona@aproperties.es)

<https://www.aproperties.es>