

(Eixample Dreta)

Ref: ONB1909018



## *Exclusive promotion of new buildings in Ausias March Street*

In one of the most sought-after areas of the Eixample Dret, just a few metres from Plaça Catalunya and Passeig de Gracia, we find this promotion of high-end housing located in a corner estate from 1895. This 6-storey building has a unique architecture that is complemented by recently renovated exquisite interiors and a large number of common areas, from a gymnasium with spa to a healthy Mediterranean restaurant on the ground floor. The project offers the possibility of enjoying the comfort of living in the centre of the city with the added value of having luxury services such as chauffeur, security and multilingual concierge available 24 hours a day, bicycle hire, massage cabins and a virtual butler who will respond to your requests sent by text message in a matter of minutes. Customers can choose between 65sqm and 232sqm and 1-3 bedrooms, some of them with terraces or balconies. In addition, the magnificent penthouse on the sixth floor has a large and impressive roof terrace for private use. The flats are beautifully designed by the prestigious architectural firm Daar Architects, and combine new technologies with innovative design. A unique opportunity to invest in a truly special property in the city of Barcelona.

Barcelona / Eixample Dreta

Unit PI-1

Completion Q3 2019

### **FEATURES**

Surface 232 m<sup>2</sup>

3 Rooms

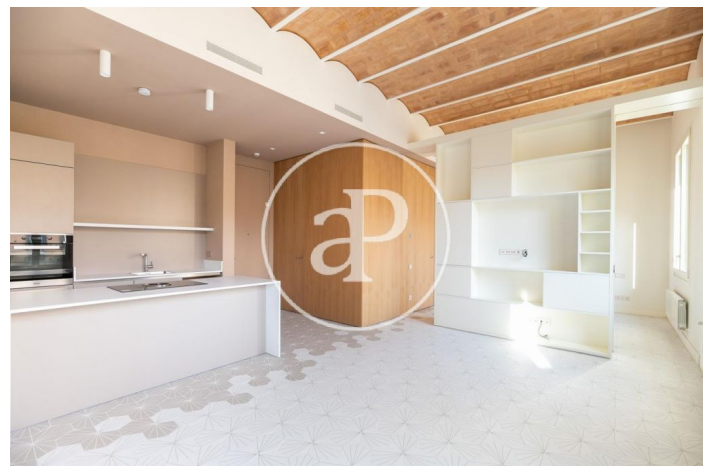
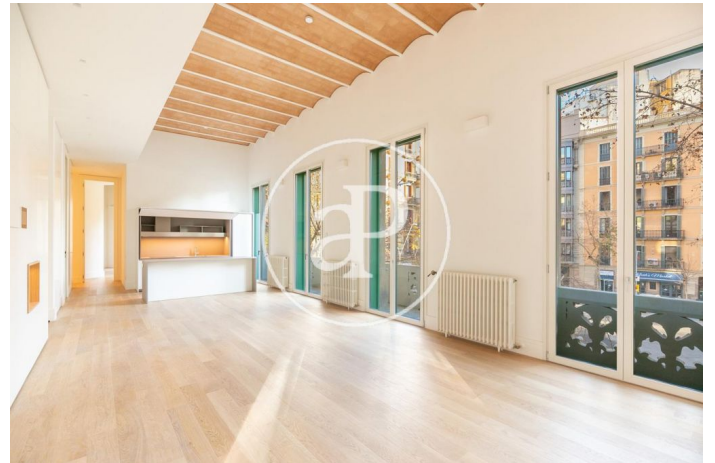
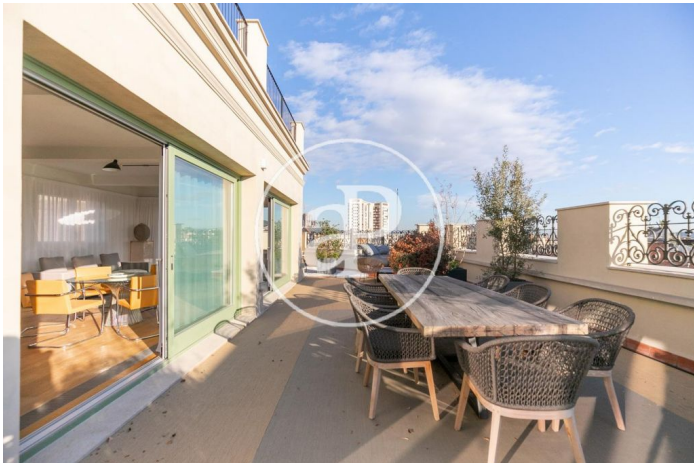
3 Toilets 1 Restrooms

- ✓ Views
- ✓ Heating
- ✓ AACC
- ✓ Gym
- ✓ Lift
- ✓ Security
- ✓ Concierge



(Eixample Dreta)

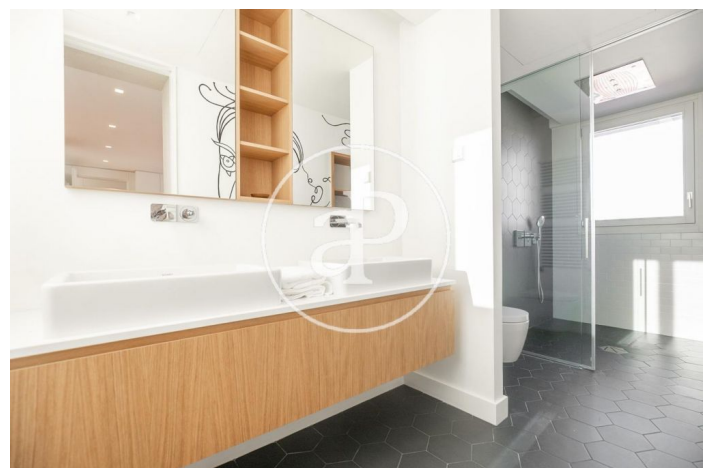
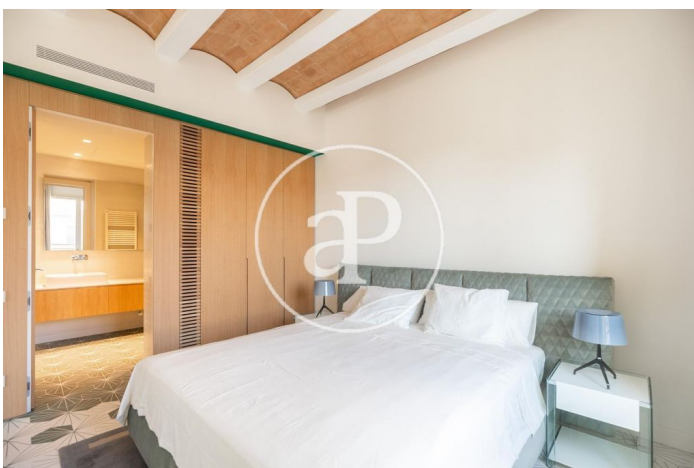
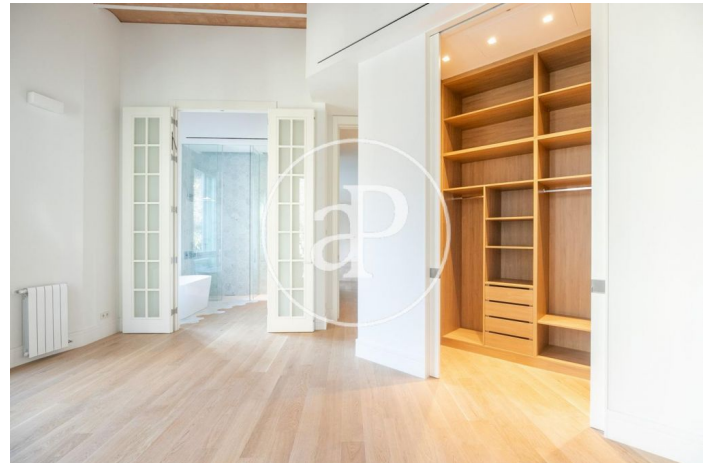
Ref: ONB1909018





(Eixample Dreta)

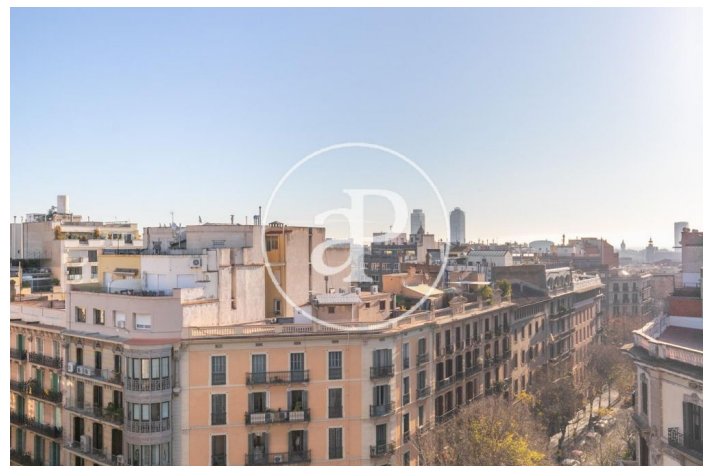
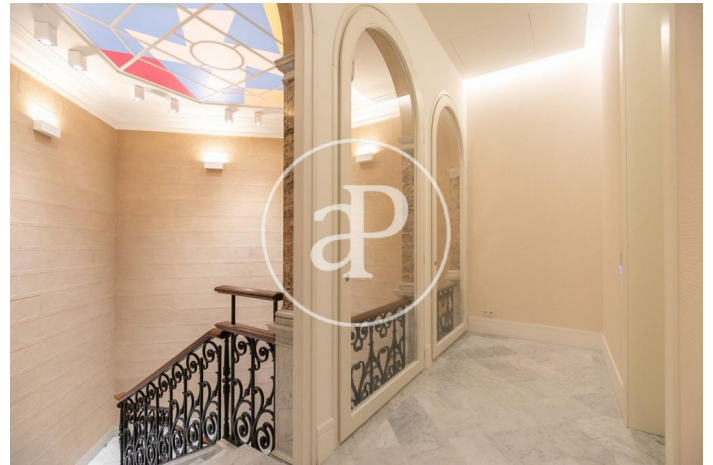
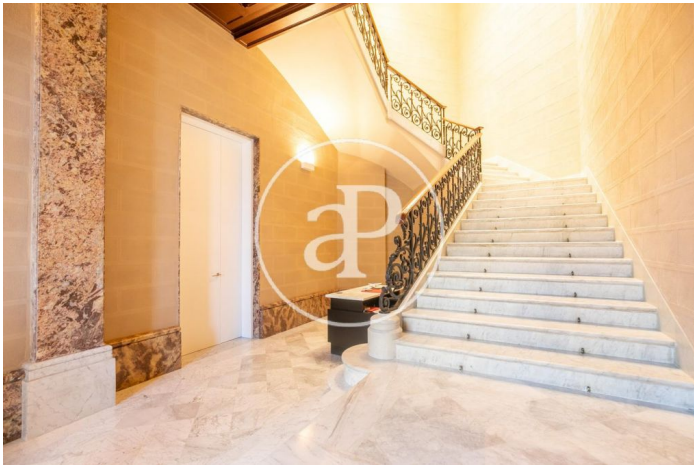
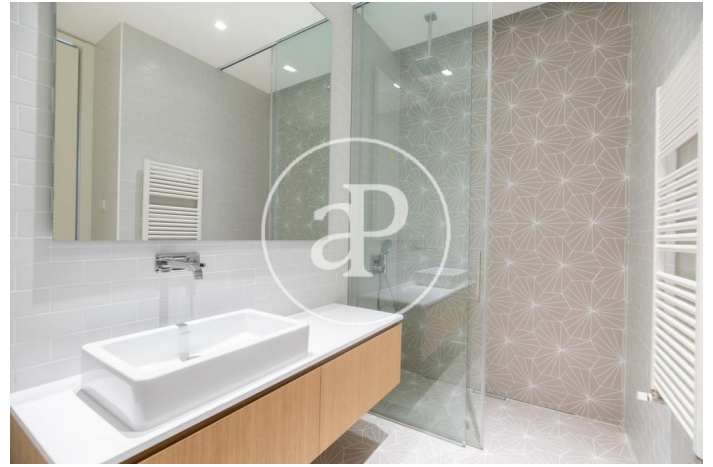
Ref: ONB1909018





(Eixample Dreta)

Ref: ONB1909018



The information about any property is not binding to any offer or contract. Any verbal or written declaration made by aProperties with regards to the value or condition of the property should not be considered accurate or factual. The pictures make reference to some parts of the property at the times that they were taken. The areas, dimensions and distances that are given are approximate and should be checked by the client. The images are computer generated and are just an approximate indication of the real appearance of the property; these may change at any time. The information with regards to the property may also change at any time.

Contact us today for more information or to arrange a viewing

Tel: 93 528 89 08 [apropertiesbarcelona@aproperties.es](mailto:apropertiesbarcelona@aproperties.es) <https://www.aproperties.es>