

(Eixample Dreta)

Ref: ONB2002003



## *New building of luxury apartments in Eixample Dret*

In the heart of the Eixample, a few steps away from Paseo de Gracia, we find this new development with a magnificent location for urban life. It is located in a quiet street, destined for pedestrian use in the near future and just a few minutes from the beaches of Barcelona. The houses facing the Carrer Girona receive natural light through 6 large windows facing the street. On the other side of the building, the large windows look out over the old mill and the quiet and elegant interior of the block. There is a duplex with 326sqm and 123sqm of garden that offers innumerable possibilities, with high ceilings of 3.2m. Outside, the garden and terraces can be converted into an oasis of family peace within the city or into a spectacular leisure area. The rest of the apartments outside the Carrer Girona have an area of 114sqm, two bedrooms and two bathrooms. The interiors, with an area of 113 to 120sqm, are compact and quiet. They have two bedrooms and two large bathrooms, overlooking the quiet inner courtyard of the block where the old mill is located. The seventh floor consists of two large attics. They are arranged in parallel, the rooms that are usually used during the day [...]

Barcelona / Eixample Dreta

Unit 4 1<sup>a</sup>

Completion Q4 2020

### **FEATURES**

Surface 113 m<sup>2</sup> / 10 m<sup>2</sup> terrace

1 Rooms

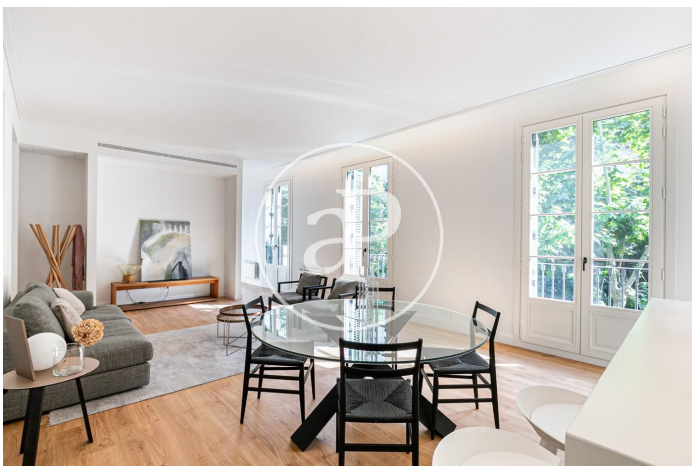
2 Toilets

- ✓ Heating
- ✓ AACC
- ✓ Terrace
- ✓ Lift

Price 999,500 €

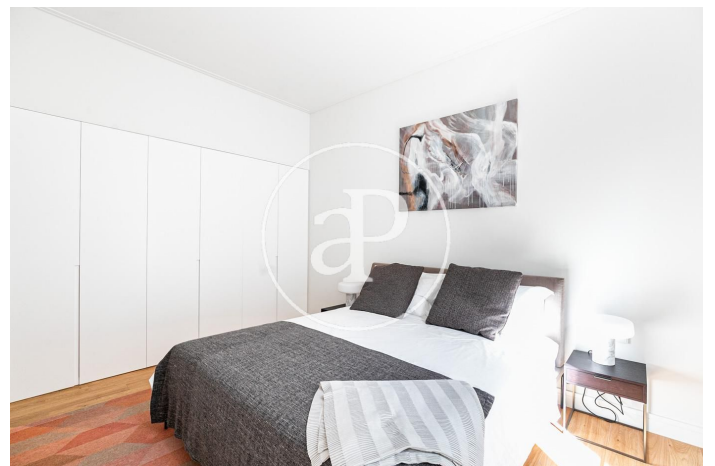
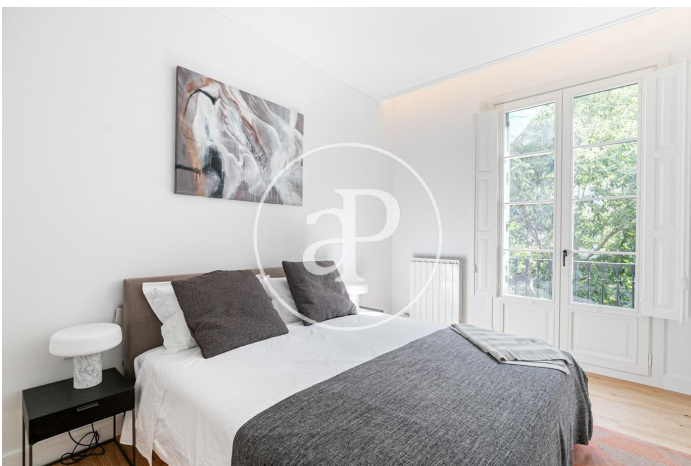
(Eixample Dreta)

Ref: ONB2002003



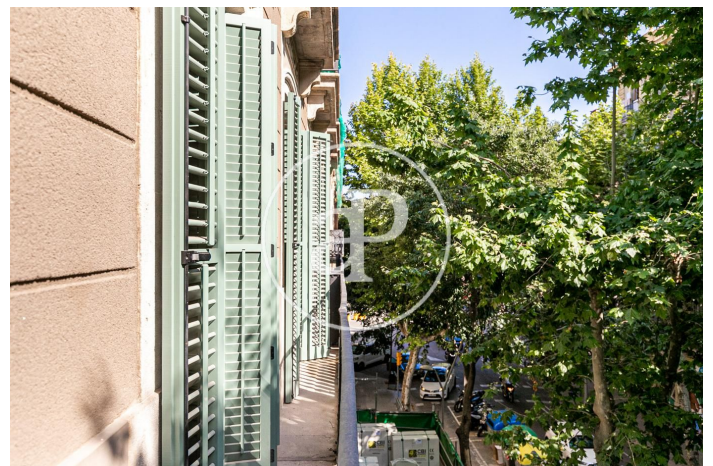
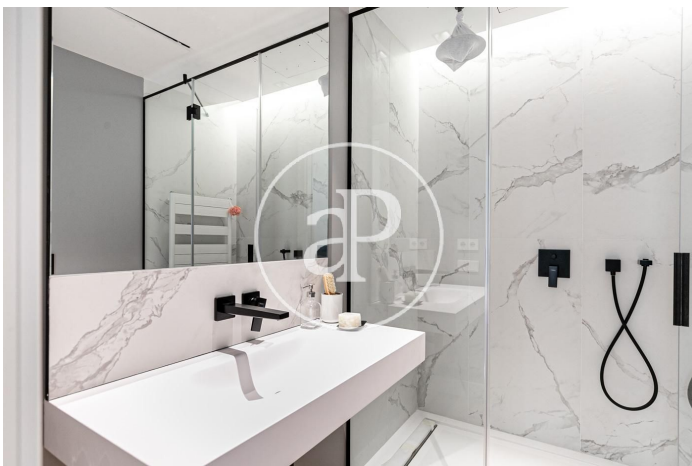
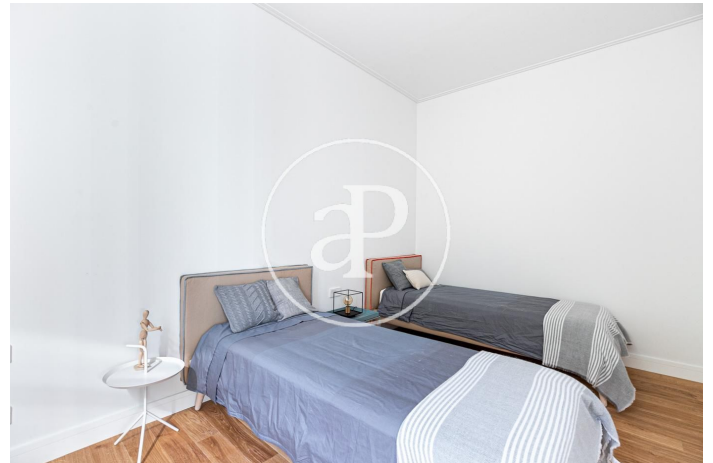
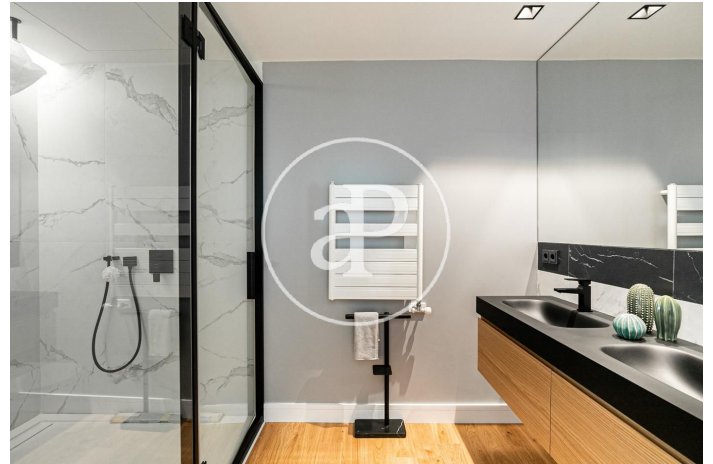
(Eixample Dreta)

Ref: ONB2002003



(Eixample Dreta)

Ref: ONB2002003



The information about any property is not binding to any offer or contract. Any verbal or written declaration made by aProperties with regards to the value or condition of the property should not be considered accurate or factual. The pictures make reference to some parts of the property at the times that they were taken. The areas, dimensions and distances that are given are approximate and should be checked by the client. The images are computer generated and are just an approximate indication of the real appearance of the property; these may change at any time. The information with regards to the property may also change at any time.

Contact us today for more information or to arrange a viewing

Tel: 93 528 89 08 [apropertiesbarcelona@aproperties.es](mailto:apropertiesbarcelona@aproperties.es) <https://www.aproperties.es>