

(Sant Gervasi - La Bonanova)

Ref: ONB2406001



Beautiful New Construction Apartment on Rda. General Mitre

Beautiful brand new apartment in the Sant Gervasi neighborhood, in a classic building, next to Monterols Park. Two elevators and concierge service. Magnificent layout, with 4 bedrooms and 3 bathrooms. Independent kitchen that includes all high-end appliances and furniture. Air conditioning through a cold/heat duct system, gas radiator heating, and parquet floors. Optional garage in an adjacent building. Excellent location next to Monterols Park, we find shops, schools, restaurants, medical centers, etc. Only 5 minutes from the Padua and Putxet FGC stations. Good road access for traveling outside the city, or going to other areas of Barcelona.

Barcelona /
Sant Gervasi - La Bonanova

Unit 1 1
Completion Q2 2024

FEATURES

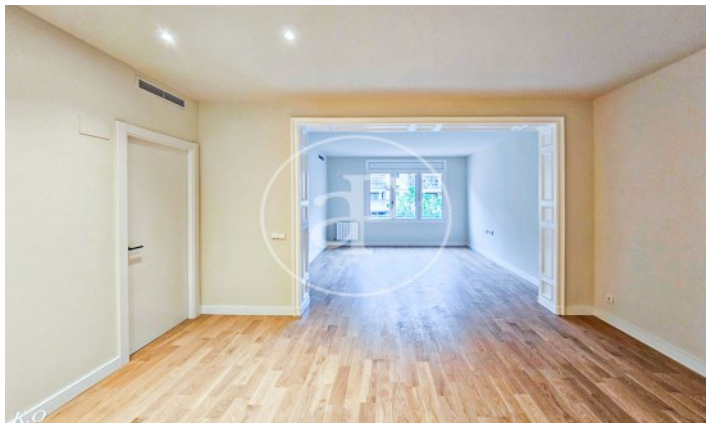
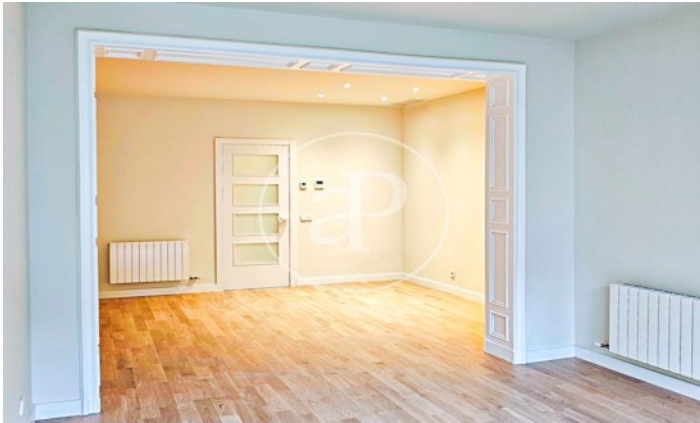
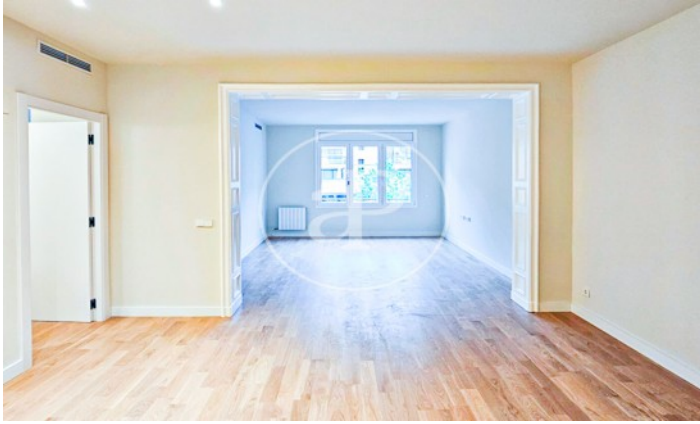
Surface 138 m²
4 Rooms
3 Toilets

- ✓ Views
- ✓ Heating
- ✓ Lift
- ✓ Concierge

Price 849,000 €

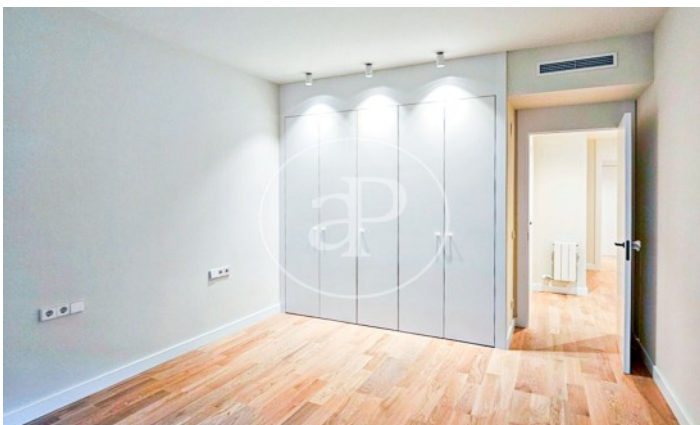
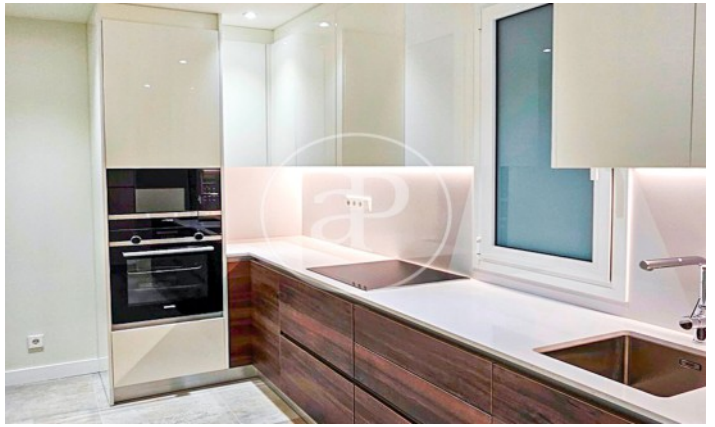
(Sant Gervasi - La Bonanova)

Ref: ONB2406001



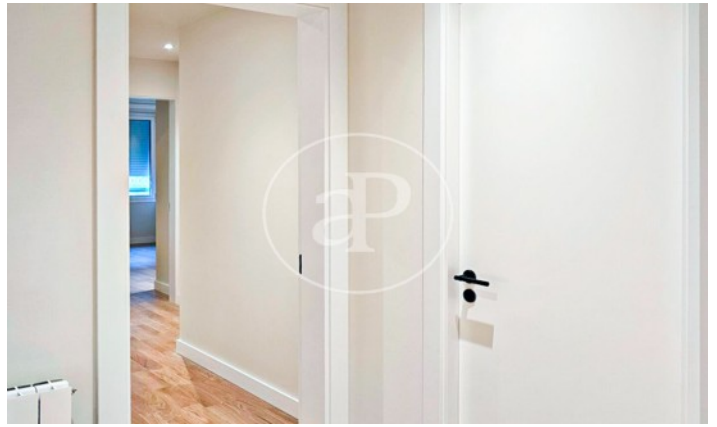
(Sant Gervasi - La Bonanova)

Ref: ONB2406001



(Sant Gervasi - La Bonanova)

Ref: ONB2406001



The information about any property is not binding to any offer or contract. Any verbal or written declaration made by aProperties with regards to the value or condition of the property should not be considered accurate or factual. The pictures make reference to some parts of the property at the times that they were taken. The areas, dimensions and distances that are given are approximate and should be checked by the client. The images are computer generated and are just an approximate indication of the real appearance of the property; these may change at any time. The information with regards to the property may also change at any time.

Contact us today for more information or to arrange a viewing

Tel: 93 528 89 08

apropertiesbarcelona@aproperties.es

<https://www.aproperties.es>