

(Torre en Conill)

Ref: ONV2405001



New building (work) for sale with Terrace in Torre en Conill (Betera)

new building (work) with Terrace and views in Torre en Conill, Betera., swimming pool, parking space, air conditioning, fitted wardrobes, garden and heating.

Betera / Torre en Conill

Unit pr 2B

Completion Q2 2025

FEATURES

Surface 302 m² / 501 m² terrace

4 Rooms

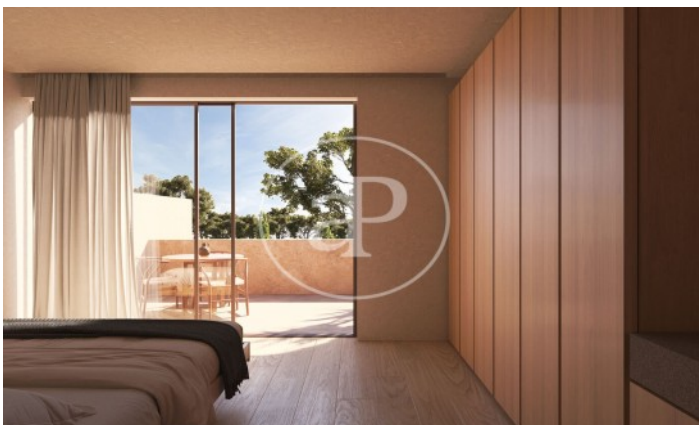
3 Toilets

- ✓ Views
- ✓ Heating
- ✓ AACC
- ✓ Terrace
- ✓ Backyard
- ✓ Pool
- ✓ Has parking

Price 815,000 €

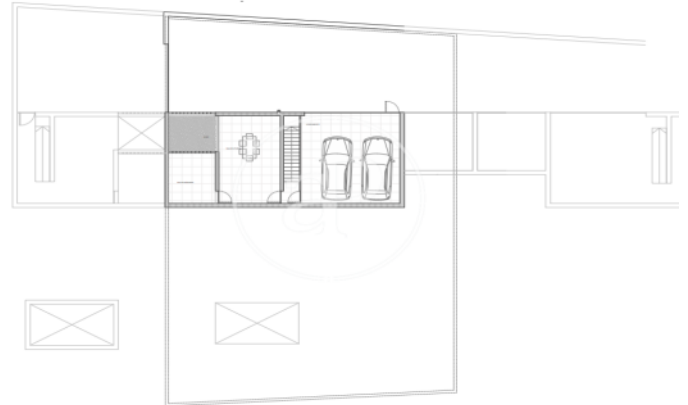
(Torre en Conill)

Ref: ONV2405001



(Torre en Conill)

Ref: ONV2405001



The information about any property is not binding to any offer or contract. Any verbal or written declaration made by aProperties with regards to the value or condition of the property should not be considered accurate or factual. The pictures make reference to some parts of the property at the times that they were taken. The areas, dimensions and distances that are given are approximate and should be checked by the client. The images are computer generated and are just an approximate indication of the real appearance of the property; these may change at any time. The information with regards to the property may also change at any time.

Contact us today for more information or to arrange a viewing

Tel: 96 128 59 65

apropertiesvalencia@aproperties.es

<https://www.aproperties.es>