

(Parque Boadilla)

Ref: ONM2501001



New building (work) for sale with Terrace in Parque Boadilla (Boadilla del Monte)

new building (work) with Terrace in Parque Boadilla, Boadilla del Monte., swimming pool, parking space, air conditioning, fitted wardrobes, laundry room, garden, heating and storage room.

Boadilla del Monte /
Parque Boadilla

Unit pr
Completion Q2 2025

FEATURES

Surface 395 m² / 105 m² terrace
6 Rooms
6 Toilets 1 Restrooms

- ✓ Heating
- ✓ Boxroom
- ✓ AACC
- ✓ Terrace
- ✓ Backyard
- ✓ Pool
- ✓ Has parking

Price 1,190,000 €

(Parque Boadilla)

Ref: ONM2501001



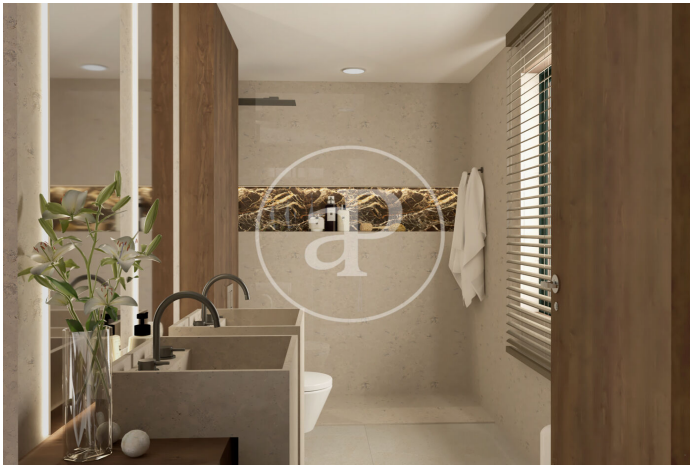
(Parque Boadilla)

Ref: ONM2501001



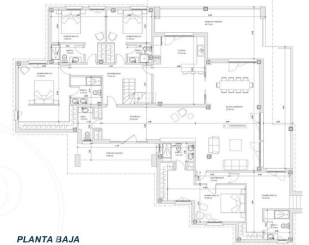
(Parque Boadilla)

Ref: ONM2501001



 **APROPERTIES**
REAL ESTATE

**RESIDENCIAL RÍO GUADELETE
PARQUE BOADILLA
VIVIENDA 2**



PLANTA BAJA

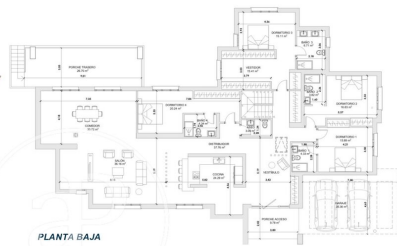


PLANTA PRIMERA

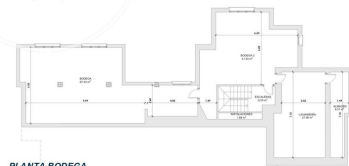


 **APROPERTIES**
REAL ESTATE

**RESIDENCIAL RÍO GUADELETE
PARQUE BOADILLA
VIVIENDA 1**



PLANTA BAJA



PLANTA BODEGA

The information about any property is not binding to any offer or contract. Any verbal or written declaration made by aProperties with regards to the value or condition of the property should not be considered accurate or factual. The pictures make reference to some parts of the property at the times that they were taken. The areas, dimensions and distances that are given are approximate and should be checked by the client. The images are computer generated and are just an approximate indication of the real appearance of the property; these may change at any time. The information with regards to the property may also change at any time.

Contact us today for more information or to arrange a viewing

Tel: 91 800 54 65 apropertiesmadrid@aproperties.es <https://www.aproperties.es>