

(Palmanova)

Ref: ONPM2405003



## *New developments for sale in Palmanova*

Nesea II offers the perfect combination of modernity, quality and comfort. The homes have the best qualities, the highest levels of comfort and the most avant-garde energy efficiency adapted to today's needs. AEDAS Homes homes are designed to adapt to your present and future needs, satisfying your space preferences. That is why, in some types of homes, Nesea II offers you two layouts to choose from: ' Living-dining room and independent kitchen. ' Kitchen open to the living room. Your home adapts to your lifestyle. Take a look at the plans that best suit your tastes and preferences and choose the one that will be your future home. Lighting: Large windows to maximise natural light. Thermal quality: Insulation adapted to climatic needs. User manual: Guidance on the efficient use of the building. Innovation: New strategies to maximise environmental benefits Renewable energies: Aerothermics for domestic hot water production Sustainable transport: Charging pre-installation for electric cars Acoustic insulation: With the exterior, in interior divisions and between dwellings. Your new development has been designed with complete communal areas where yo [...]

Calvià / Palmanova

Unit 2 C

Completion Q4 2025

### **FEATURES**

Surface 54 m<sup>2</sup> / 6 m<sup>2</sup> terrace

1 Rooms

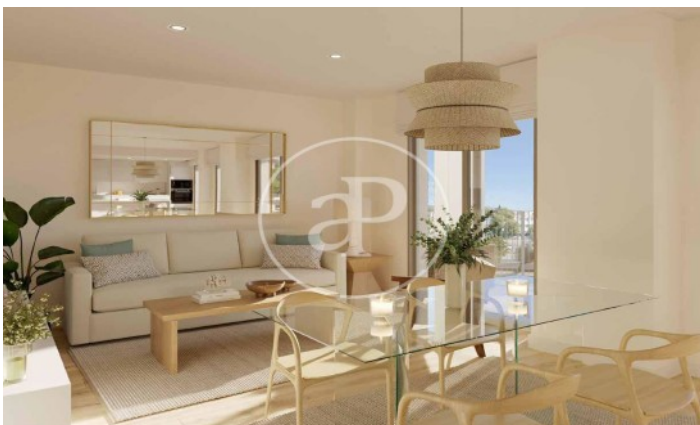
1 Toilets

- ✓ Views
- ✓ Heating
- ✓ Furnished
- ✓ Boxroom
- ✓ AACC
- ✓ Terrace
- ✓ Backyard
- ✓ Pool
- ✓ Gym
- ✓ Lift
- ✓ Has parking

Price 355,000 €

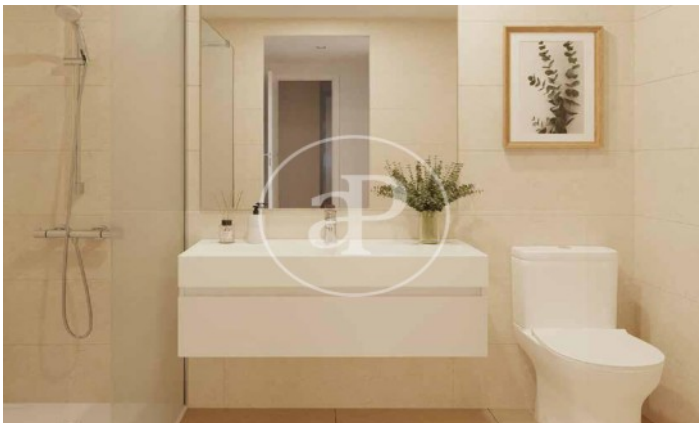
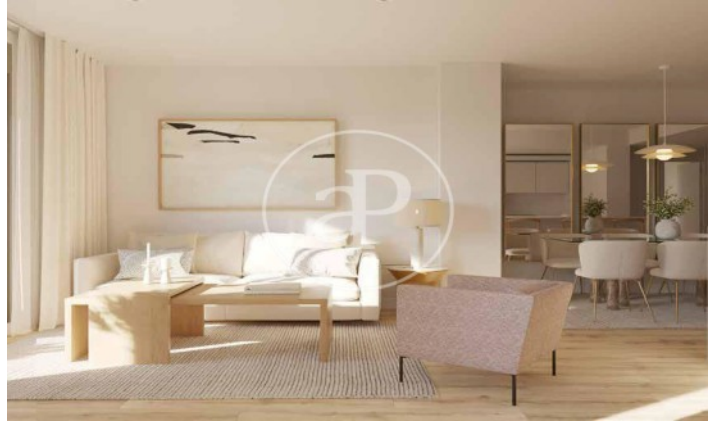
(Palmanova)

Ref: ONPM2405003



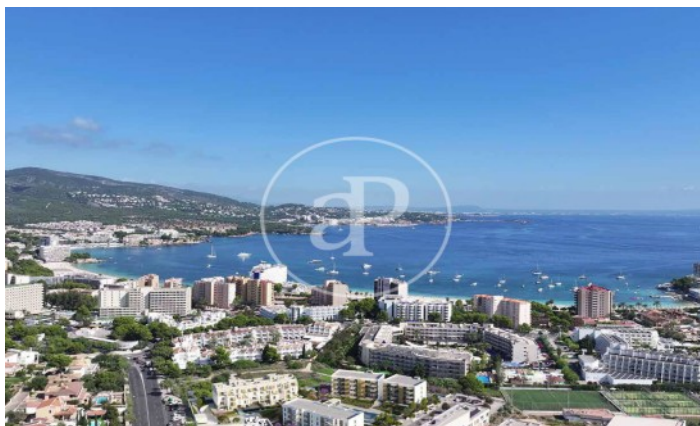
(Palmanova)

Ref: ONPM2405003



(Palmanova)

Ref: ONPM2405003



The information about any property is not binding to any offer or contract. Any verbal or written declaration made by aProperties with regards to the value or condition of the property should not be considered accurate or factual. The pictures make reference to some parts of the property at the times that they were taken. The areas, dimensions and distances that are given are approximate and should be checked by the client. The images are computer generated and are just an approximate indication of the real appearance of the property; these may change at any time. The information with regards to the property may also change at any time.

Contact us today for more information or to arrange a viewing

Tel: 871 16 01 60

[apropertiespalma@aproperties.es](mailto:apropertiespalma@aproperties.es)

<https://www.aproperties.es>