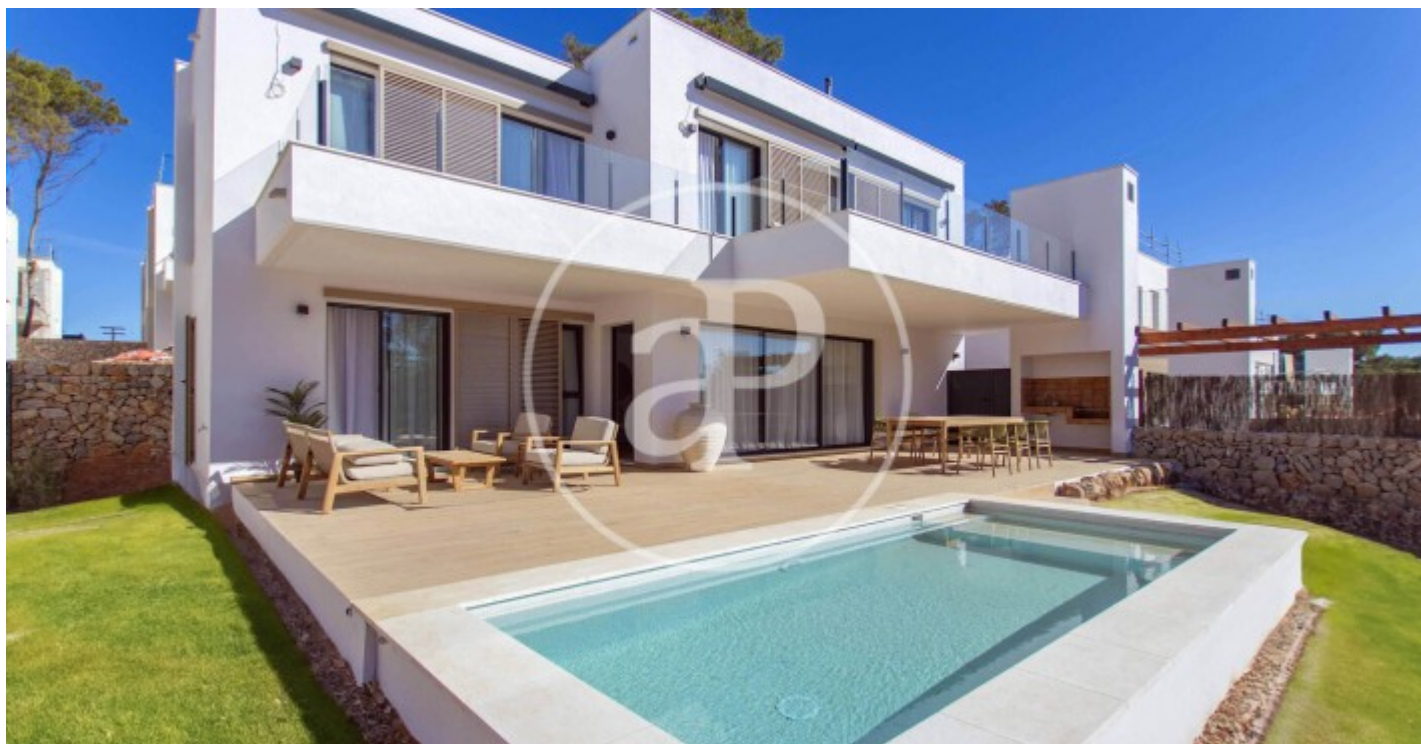


(Es Mercadal)

Ref: ONPM2404002



## House for sale in Menorca

Sa Llosa Homes is a private and exclusive residential complex surrounded by pine trees that overlooks the Mediterranean horizon in the tranquillity of a spectacular natural environment. It is everything you are dreaming of. An unbeatable opportunity to enjoy a unique residential complex for those who value exclusivity and really know how to choose. Sa Llosa Homes is a gated residential complex, made up of 50 3 and 4 bedroom villas, with a modern, functional and innovative design that blends into its beautiful natural surroundings through the use of typical island materials. Each house has a private garage, its own swimming pool, spacious terraces with barbecue, chill-out area and a green zone that blends in with the exterior landscape of pine trees and typical Mediterranean vegetation. It also has communal areas for the exclusive use of Sa Llosa Homes and the future Sa Llosa Homes II, which will delight with its swimming pool, chill-out areas, outdoor gym and different spaces for relaxing or even working, as the communal areas include a gourmet room for preparing the best dishes and recreation and study rooms for adults and young people, all with privileged views and making th [...]

Es Mercadal

Unit pr  
Completion Q2 2024

### FEATURES

Surface 252 m<sup>2</sup> / 67 m<sup>2</sup> terrace  
4 Rooms  
4 Toilets

- ✓ Views
- ✓ Heating
- ✓ Boxroom
- ✓ AACC
- ✓ Backyard
- ✓ Pool
- ✓ Has parking

Price 755,000 €

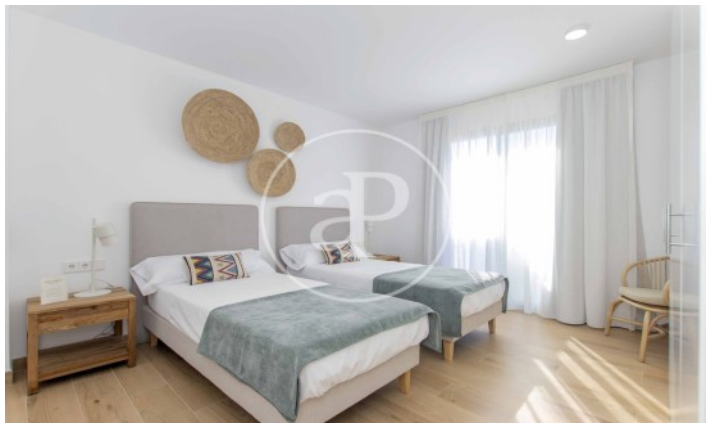
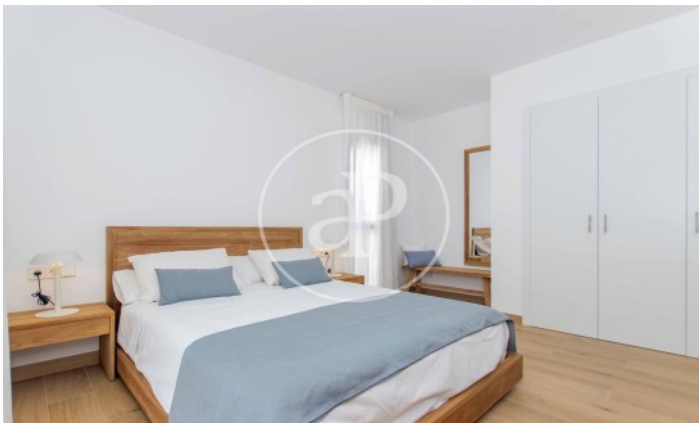
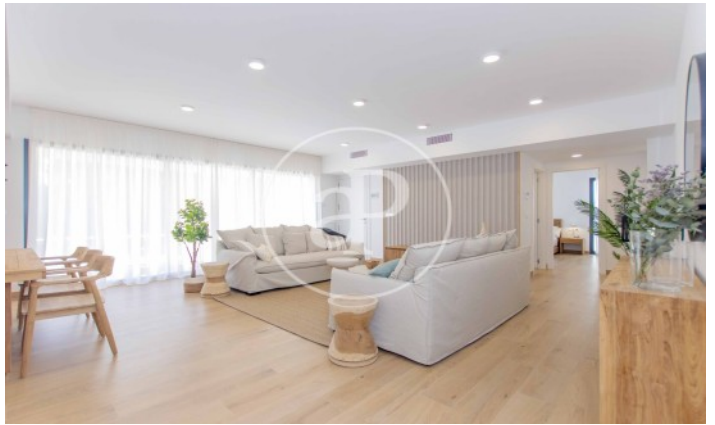
(Es Mercadal)

Ref: ONPM2404002



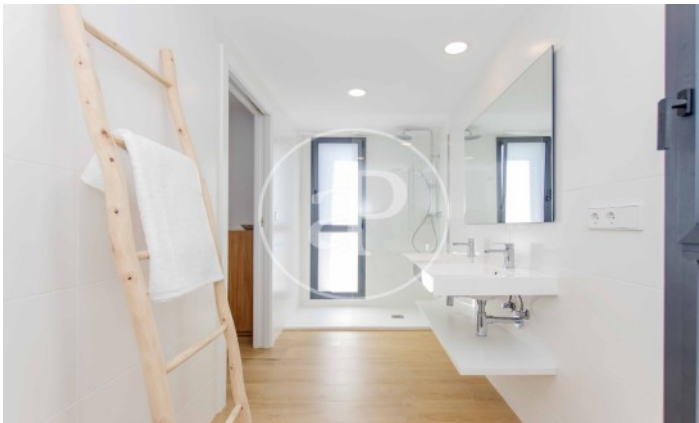
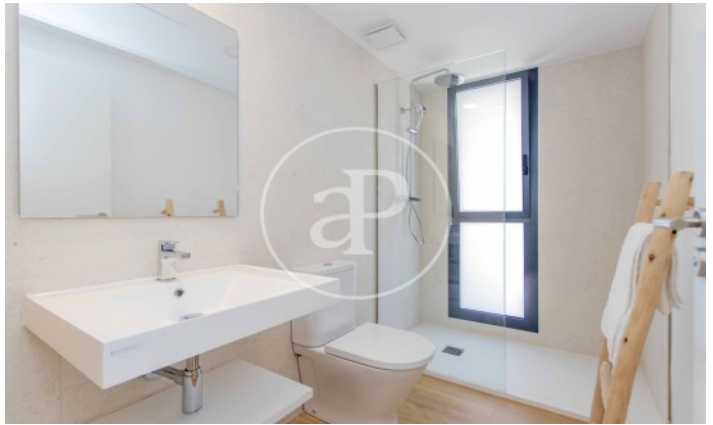
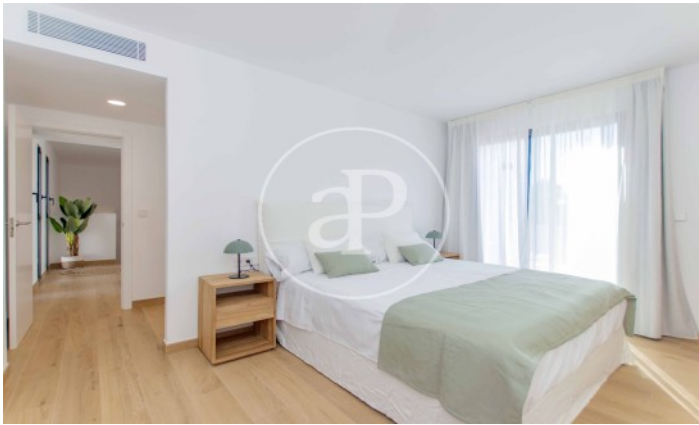
(Es Mercadal)

Ref: ONPM2404002



(Es Mercadal)

Ref: ONPM2404002



The information about any property is not binding to any offer or contract. Any verbal or written declaration made by aProperties with regards to the value or condition of the property should not be considered accurate or factual. The pictures make reference to some parts of the property at the times that they were taken. The areas, dimensions and distances that are given are approximate and should be checked by the client. The images are computer generated and are just an approximate indication of the real appearance of the property; these may change at any time. The information with regards to the property may also change at any time.

Contact us today for more information or to arrange a viewing

Tel: 871 16 01 60

[apropertiespalma@aproperties.es](mailto:apropertiespalma@aproperties.es)

<https://www.aproperties.es>