

(Conde Orgaz - Piovera)

Ref: ONM2401001



## *New building (work) for sale near to Arturo Soria.*

Discover this exclusive development consisting of 4 semi-detached villas. These are completely independent homes with more than 350 m<sup>2</sup> built interior, 4 bedrooms en suite, service area, 2 living rooms, private lift and swimming pool, access to terraces on all floors and 2 or 3 parking spaces. Each property is distributed over 3 floors plus basement. The ground floor is designed as a social space with entrance hall, guest toilet, independent kitchen with island and large living-dining room with access to the main terrace and swimming pool. On the first floor there are 3 large en-suite bedrooms, all with access to a common terrace. On the first floor and with total privacy is the master bedroom, which has a large dressing room, bathroom with shower and bathtub and access to a private terrace. Finally, in the basement there is a service bedroom, laundry area, utility room, toilet, multipurpose room and exit to the parking. Finally, each property has the best qualities, highlighting its completely individual air conditioning system of high energy efficiency by means of underfloor heating and cooling and with the support of solar panels. Can you imagine living here?

Hortaleza / Conde Orgaz - Piovera

Unit pr

Completion Q1 2024

### **FEATURES**

Surface 359 m<sup>2</sup> / 150 m<sup>2</sup> terrace

6 Rooms

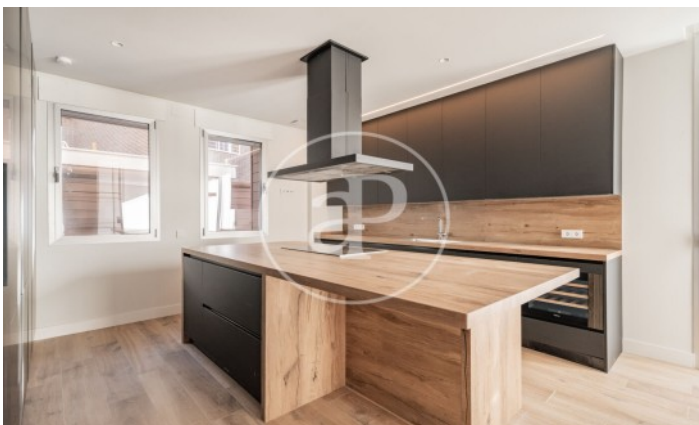
5 Toilets 2 Restrooms

- ✓ Views
- ✓ Heating
- ✓ Boxroom
- ✓ AACC
- ✓ Terrace
- ✓ Backyard
- ✓ Pool
- ✓ Gym
- ✓ Lift
- ✓ Has parking

Price 2,500,000 €

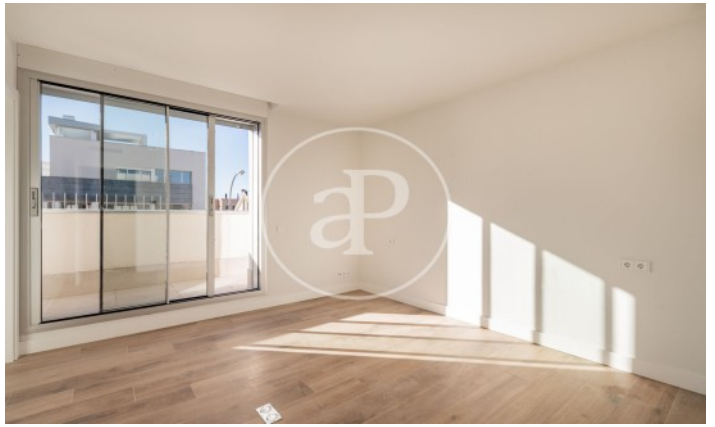
(Conde Orgaz - Piovera)

Ref: ONM2401001



(Conde Orgaz - Piovera)

Ref: ONM2401001



(Conde Orgaz - Piovera)

Ref: ONM2401001



The information about any property is not binding to any offer or contract. Any verbal or written declaration made by aProperties with regards to the value or condition of the property should not be considered accurate or factual. The pictures make reference to some parts of the property at the times that they were taken. The areas, dimensions and distances that are given are approximate and should be checked by the client. The images are computer generated and are just an approximate indication of the real appearance of the property; these may change at any time. The information with regards to the property may also change at any time.

Contact us today for more information or to arrange a viewing

Tel: 91 800 54 65

[apropertiesmadrid@aproperties.es](mailto:apropertiesmadrid@aproperties.es)

<https://www.aproperties.es>