



APROPERTIES
REAL ESTATE

Calle Mossen Femades 3, bajo dcha. Ed.
Lauria
Tel: 96 128 59 65
<https://www.aproperties.es>

(La Pobla de Vallbona)

Ref: ONV2401002



New building (work) for sale with Terrace in La Pobla de Vallbona

new building (work) with Terrace and views in La Pobla de Vallbona., swimming pool, air conditioning, fitted wardrobes, garden and heating.

La Pobla de Vallbona

Unit pr

Completion Q2 2025

FEATURES

Surface 142 m² / 189 m² terrace

4 Rooms

3 Toilets

- ✓ Views
- ✓ Heating
- ✓ AACC
- ✓ Terrace
- ✓ Backyard
- ✓ Pool

Price 324,000 €

(La Pobla de Vallbona)

Ref: ONV2401002

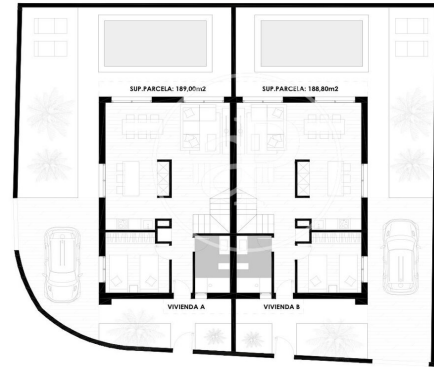


(La Pobla de Vallbona)

Ref: ONV2401002

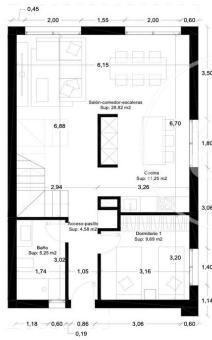


PLANTA GENERAL



COTAS Y SUPERFICIES

Planta Baja | Vivienda Tipo



CUADRO DE SUPERFICIES		
ESTANCIAS	SUP.UTIL	SUP.COVS
Acceso-pasillo	4,38 m ²	
Bañõ	3,52 m ²	
Dormitorio 1	9,49 m ²	
Cocina	11,25 m ²	
Sala+Comedor-Escuadra	28,82 m ²	
Acceso cubierto	2,40 m ²	
Terrazo cubierto	3,32 m ²	
TOTAL PLANTA BAJA	62,81 m²	71,73 m²
Planta	4,27 m ²	
Escuadra	3,77 m ²	
Dormitorio 2	11,94 m ²	
Dormitorio 3	10,44 m ²	
Bañõ	4,88 m ²	
Dormitorio principal	11,14 m ²	
Vestibulo	4,08 m ²	
Bañõ en suite	4,88 m ²	
Terrazo descubierta	4,18 m ²	
TOTAL PLANTA PRIMERA	62,42 m²	71,07 m²
TOTAL VIVIENDA	120,13 m²	142,80 m²
TOTAL PISCINA	14,00 m²	
TOTAL SOLERAS EXTERIORES	60,00 m²	
TOTAL CONSTRUIDO	214,83 m²	

COTAS Y SUPERFICIES

Planta 1ª | Vivienda Tipo



CUADRO DE SUPERFICIES		
ESTANCIAS	SUP.UTIL	SUP.COVS
Acceso-pasillo	4,58 m ²	
Bañõ	3,52 m ²	
Dormitorio 1	9,49 m ²	
Cocina	11,25 m ²	
Sala+Comedor-Escuadra	28,82 m ²	
Acceso cubierto	2,40 m ²	
Terrazo cubierto	3,32 m ²	
TOTAL PLANTA BAJA	62,81 m²	71,73 m²
Planta	4,27 m ²	
Escuadra	3,77 m ²	
Dormitorio 2	11,94 m ²	
Dormitorio 3	10,44 m ²	
Bañõ	4,88 m ²	
Dormitorio principal	11,14 m ²	
Vestibulo	4,08 m ²	
Bañõ en suite	4,88 m ²	
Terrazo descubierta	4,18 m ²	
TOTAL PLANTA PRIMERA	62,42 m²	71,07 m²
TOTAL VIVIENDA	120,13 m²	142,80 m²
TOTAL PISCINA	14,00 m²	
TOTAL SOLERAS EXTERIORES	60,00 m²	
TOTAL CONSTRUIDO	214,83 m²	



(La Pobla de Vallbona)

Ref: ONV2401002



The information about any property is not binding to any offer or contract. Any verbal or written declaration made by aProperties with regards to the value or condition of the property should not be considered accurate or factual. The pictures make reference to some parts of the property at the times that they were taken. The areas, dimensions and distances that are given are approximate and should be checked by the client. The images are computer generated and are just an approximate indication of the real appearance of the property; these may change at any time. The information with regards to the property may also change at any time.

Contact us today for more information or to arrange a viewing

Tel: 96 128 59 65 apropertiesvalencia@aproperties.es <https://www.aproperties.es>