

(La Pobla de Vallbona)

Ref: ONV2401002



## *New building (work) for sale with Terrace in La Pobla de Vallbona*

new building (work) with Terrace and views in La Pobla de Vallbona., swimming pool, air conditioning, fitted wardrobes, garden and heating.

La Pobla de Vallbona

Unit pr

Completion Q2 2025

### **FEATURES**

Surface 142 m<sup>2</sup> / 188 m<sup>2</sup> terrace

4 Rooms

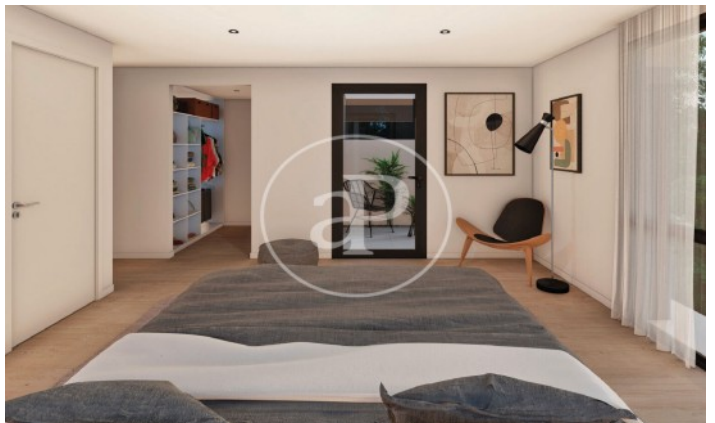
3 Toilets

- ✓ Views
- ✓ Heating
- ✓ AACC
- ✓ Terrace
- ✓ Backyard
- ✓ Pool

Price 324,000 €

(La Pobla de Vallbona)

Ref: ONV2401002

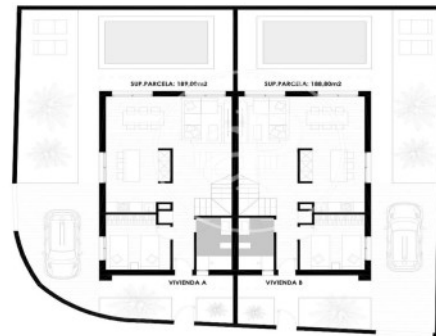


(La Pobla de Vallbona)

Ref: ONV2401002

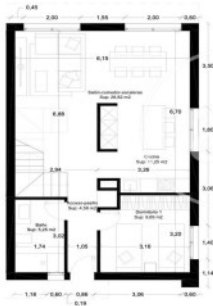


PLANTA GENERAL



COTAS Y SUPERFICIES

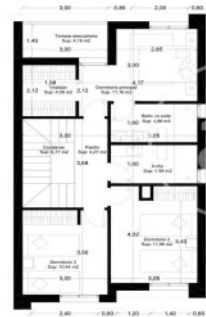
Planta Baja | Vivienda Tipo



ESPECIFICACION	SUP. ÚTIL	SUP. COM.
Acceso-pasillo	4,38 m <sup>2</sup>	
Baño	5,25 m <sup>2</sup>	
Dormitorio 1	9,87 m <sup>2</sup>	
Cocina	11,25 m <sup>2</sup>	
Sala de Comedor-Escritorio	28,82 m <sup>2</sup>	
Acceso - vestíbulo	2,40 m <sup>2</sup>	
Terraza cubierta	5,25 m <sup>2</sup>	
<b>TOTAL PLANTA BAJA</b>	<b>67,81 m<sup>2</sup></b>	<b>71,73 m<sup>2</sup></b>
<b>TOTAL VIVIENDA</b>	<b>136,13 m<sup>2</sup></b>	<b>142,80 m<sup>2</sup></b>
<b>TOTAL SUPERFICIES ÚTILES</b>	<b>49,89 m<sup>2</sup></b>	
<b>TOTAL CONTRUÍDO</b>	<b>214,81 m<sup>2</sup></b>	

COTAS Y SUPERFICIES

Planta 1ª | Vivienda Tipo



ESPECIFICACION	SUP. ÚTIL	SUP. COM.
Acceso-pasillo	4,38 m <sup>2</sup>	
Baño	5,25 m <sup>2</sup>	
Dormitorio 1	9,87 m <sup>2</sup>	
Cocina	11,25 m <sup>2</sup>	
Sala de Comedor-Escritorio	28,82 m <sup>2</sup>	
Acceso - vestíbulo	2,40 m <sup>2</sup>	
Terraza cubierta	5,25 m <sup>2</sup>	
<b>TOTAL PLANTA BAJA</b>	<b>67,81 m<sup>2</sup></b>	<b>71,73 m<sup>2</sup></b>
<b>TOTAL VIVIENDA</b>	<b>136,13 m<sup>2</sup></b>	<b>142,80 m<sup>2</sup></b>
<b>TOTAL SUPERFICIES ÚTILES</b>	<b>49,89 m<sup>2</sup></b>	
<b>TOTAL CONTRUÍDO</b>	<b>214,81 m<sup>2</sup></b>	

The information about any property is not binding to any offer or contract. Any verbal or written declaration made by aProperties with regards to the value or condition of the property should not be considered accurate or factual. The pictures make reference to some parts of the property at the times that they were taken. The areas, dimensions and distances that are given are approximate and should be checked by the client. The images are computer generated and are just an approximate indication of the real appearance of the property; these may change at any time. The information with regards to the property may also change at any time.

Contact us today for more information or to arrange a viewing

Tel: 96 128 59 65

[apropertiesvalencia@aproperties.es](mailto:apropertiesvalencia@aproperties.es)

<https://www.aproperties.es>