

(Nuevos Ministerios - Ríos Rosas)

Ref: ONM2408001



New building (work) for sale in Chamberí (Madrid)

Exclusive luxury residences in the Chamberí area. Imposing building with a protected façade and complete refurbishment of the interior. It has 12 homes with beautiful finishes and designer architecture. Balconies and terraces allow natural light to flood the main areas. All flats have 2 bedrooms with en-suite bathrooms, spacious wardrobes, guest toilet and fully equipped kitchen. In addition, each flat includes parking and storage room. Enjoy the communal areas such as rooftop swimming pool, gym, wellness area with hydromassage and massage cabin, rooftop, wine cellar, multipurpose room and garden. Located in the Chamberí district, one of the most exclusive and with the greatest variety of entertainment and gastronomy in Madrid. The area offers proximity to emblematic areas such as the city centre and the traditional Salamanca neighbourhood. Can you imagine living here?

Madrid /
Nuevos Ministerios - Ríos Rosas
Unit 1 B
Completion Q2 2026

FEATURES

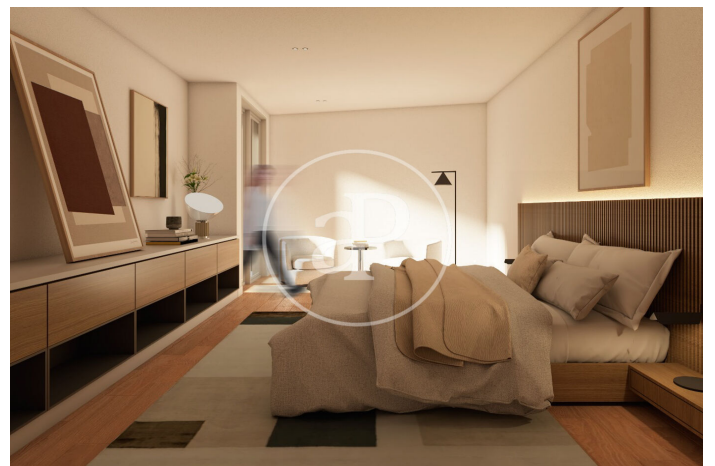
Surface 158 m² / 5 m² terrace
2 Rooms
2 Toilets 1 Restrooms

- ✓ Views
- ✓ Heating
- ✓ Boxroom
- ✓ AACC
- ✓ Terrace
- ✓ Backyard
- ✓ Pool
- ✓ Gym
- ✓ Lift
- ✓ Security
- ✓ Concierge
- ✓ Has parking

Price 1,500,000 €

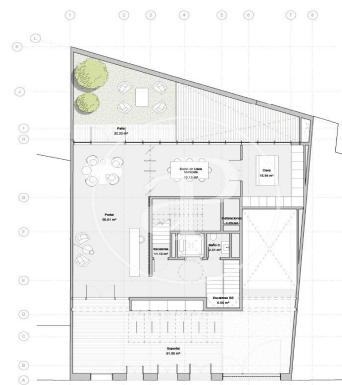
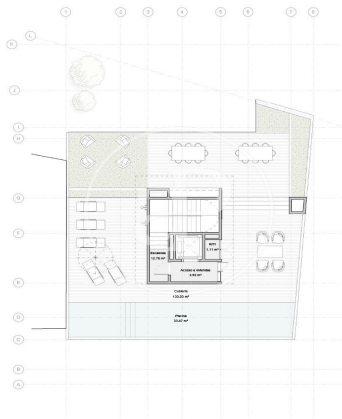
(Nuevos Ministerios - Ríos Rosas)

Ref: ONM2408001



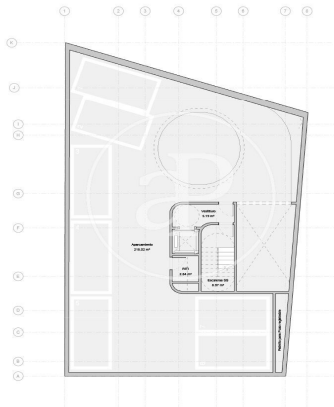
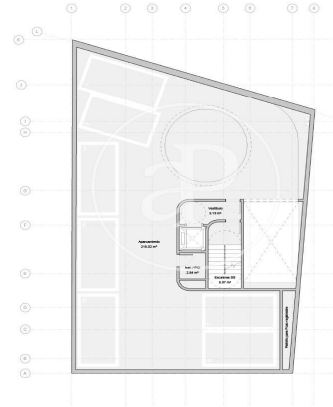
(Nuevos Ministerios - Ríos Rosas)

Ref: ONM2408001



(Nuevos Ministerios - Ríos Rosas)

Ref: ONM2408001



1 PLANTA BAJA
1:200



2 PLANTA 1
1:200



3 PLANTA 2
1:200



4 PLANTA 3
1:200



5 PLANTA 4
1:200



6 PLANTA 5
1:200



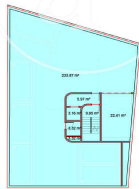
7 PLANTA 6
1:200



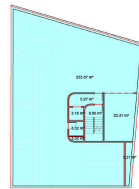
8 PLANTA 7
1:200



9 PLANTA 8
1:200



10 PLANTA 9
1:200



11 PLANTA 10
1:200

The information about any property is not binding to any offer or contract. Any verbal or written declaration made by aProperties with regards to the value or condition of the property should not be considered accurate or factual. The pictures make reference to some parts of the property at the times that they were taken. The areas, dimensions and distances that are given are approximate and should be checked by the client. The images are computer generated and are just an approximate indication of the real appearance of the property; these may change at any time. The information with regards to the property may also change at any time.

Contact us today for more information or to arrange a viewing

Tel: 91 800 54 65 apropertiesmadrid@aproperties.es <https://www.aproperties.es>