

(Valdeacederas)

Ref: ONM2210002



### *New development in Valdeacederas.*

EXCLUSIVE RESIDENTIAL TOWER IN TETUÁN. Discover this spectacular residential project of 100 metres high with 25 floors and which has achieved the BREEAM Seal of Sustainability. It has a strategic location, with panoramic views over the whole of Madrid and La Sierra and just a few minutes from Paseo de la Castellana, the 4 Towers, Azca, Chamartín station, the north and northeast accesses to the M-30 and a multitude of green and sports areas. The available typologies are 2 and 3 bedroom apartments, with or without terrace, with fully equipped kitchens, underfloor heating and ducted air conditioning. All homes include a storage room and parking space in the price. The building has a hotel-style concierge service and has large communal areas comprising: urban vegetable garden, gastroteca, gym, terraces, gardens and 2 swimming pools, one of which is on the rooftop. Can you imagine living here?

Madrid / Valdeacederas

Unit 1 20

Completion Q4 2022

#### **FEATURES**

Surface 92 m<sup>2</sup>

2 Rooms

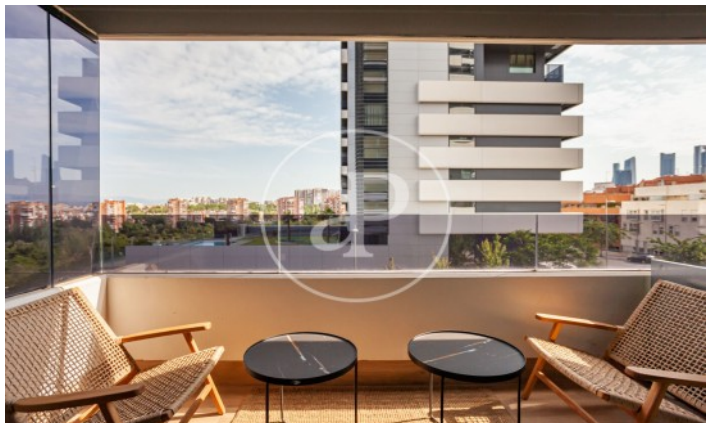
2 Toilets

- ✓ Views
- ✓ Heating
- ✓ Boxroom
- ✓ AACC
- ✓ Backyard
- ✓ Pool
- ✓ Gym
- ✓ Lift
- ✓ Security
- ✓ Concierge
- ✓ Has parking

**PRICE UPON REQUEST**

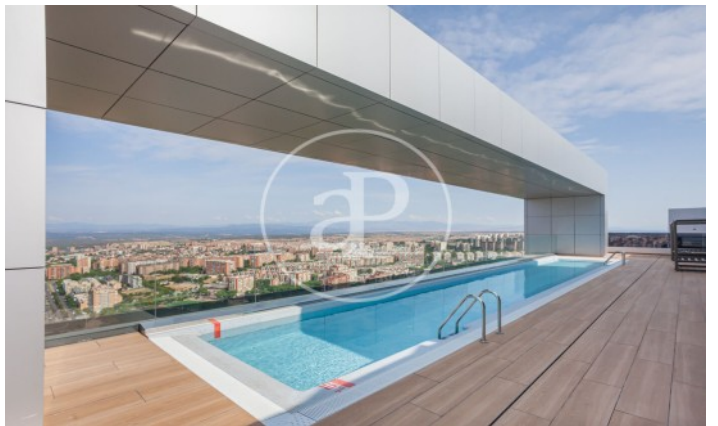
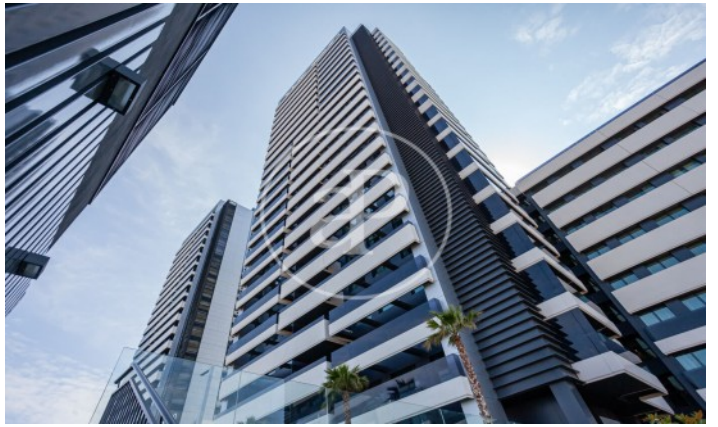
(Valdeacederas)

Ref: ONM2210002



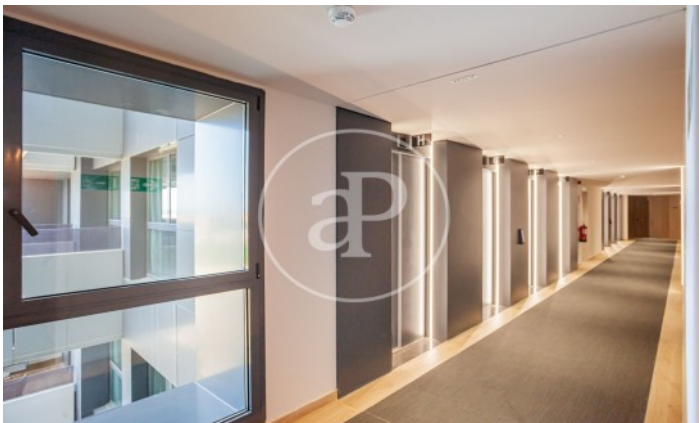
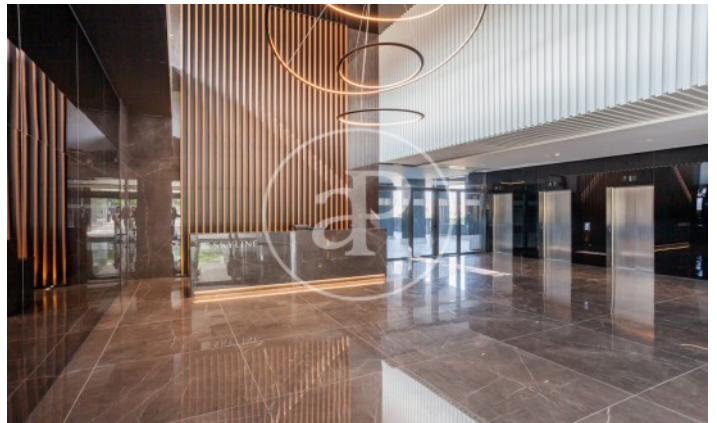
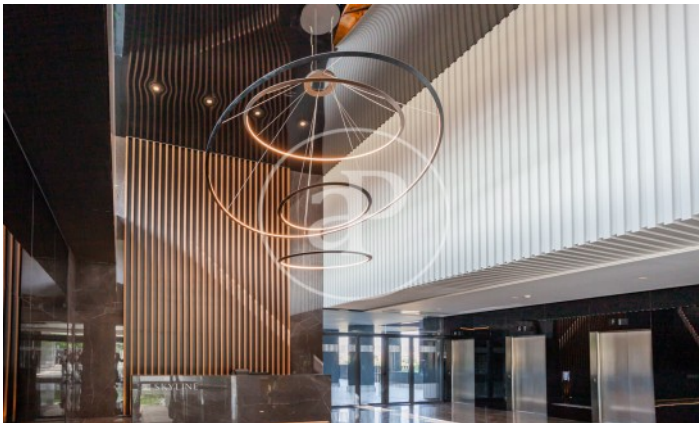
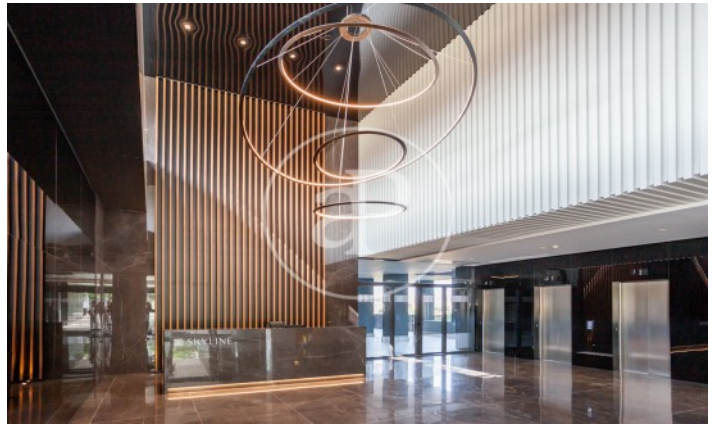
(Valdeacederas)

Ref: ONM2210002



(Valdeacederas)

Ref: ONM2210002



The information about any property is not binding to any offer or contract. Any verbal or written declaration made by aProperties with regards to the value or condition of the property should not be considered accurate or factual. The pictures make reference to some parts of the property at the times that they were taken. The areas, dimensions and distances that are given are approximate and should be checked by the client. The images are computer generated and are just an approximate indication of the real appearance of the property; these may change at any time. The information with regards to the property may also change at any time.

Contact us today for more information or to arrange a viewing

Tel: 91 800 54 65

[apropertiesmadrid@aproperties.es](mailto:apropertiesmadrid@aproperties.es)

<https://www.aproperties.es>