



Es Garrovers, Marratxí

REF. VPM2401008

House for sale in La Planera

Features

- ✓ Heating
- ✓ AACC
- ✓ Backyard
- ✓ Has parking
- ✓ Boxroom
- ✓ Terrace
- ✓ Pool

Price

1,180,000 €

Surface

317 m²

Plot surface

1,937 m²

Bedrooms

4

Bathrooms

3



Welcome to your own corner of luxury in the exclusive urbanisation of La Planera, where this designer house offers you a unique experience of elegance and comfort.

From the first glance, the ventilated façade lined in wood reveals the distinction that characterises this unique property. Immerse yourself in the tranquillity of your own oasis, with a swimming pool and barbecue area ideal for social gatherings and spacious sunny terraces that invite you to relax and contemplate. For sports enthusiasts and children, there is a basketball court and an artificial football pitch, while the playground guarantees fun for the whole family. Explore a fresh green world

in the well-tended vegetable garden, with an irrigation system covering the entire estate. Convenience is elevated with additional storage space, perfect for organising and storing your belongings. Inside, the house captivates you with four bedrooms that offer an intimate and cosy space. The master bedroom, a luxury suite, features a whirlpool bath and a spacious dressing room. The three elegantly designed bathrooms offer comfort and style, and there is also a laundry room for maximum convenience. The spacious living room features large windows that let in natural light, a double-height...

Contact us,
we will be happy to assist you,
to offer you more details and information.

Es Garrovers, Marratxí

REF. VPM2401008



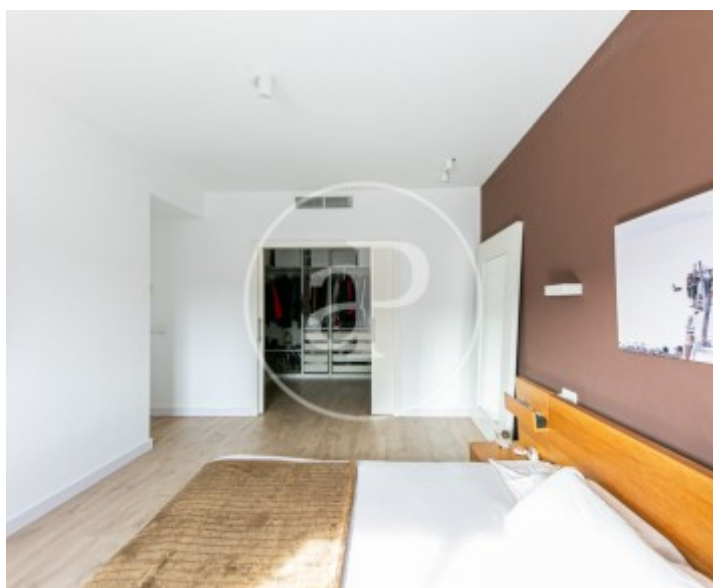
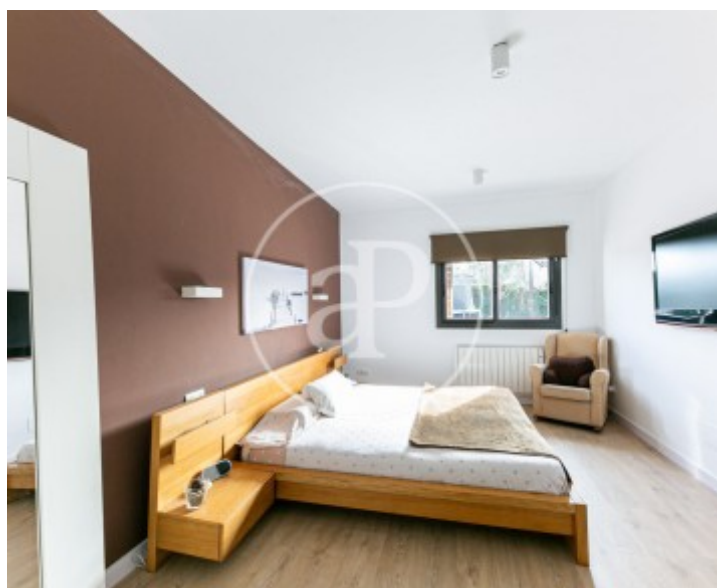
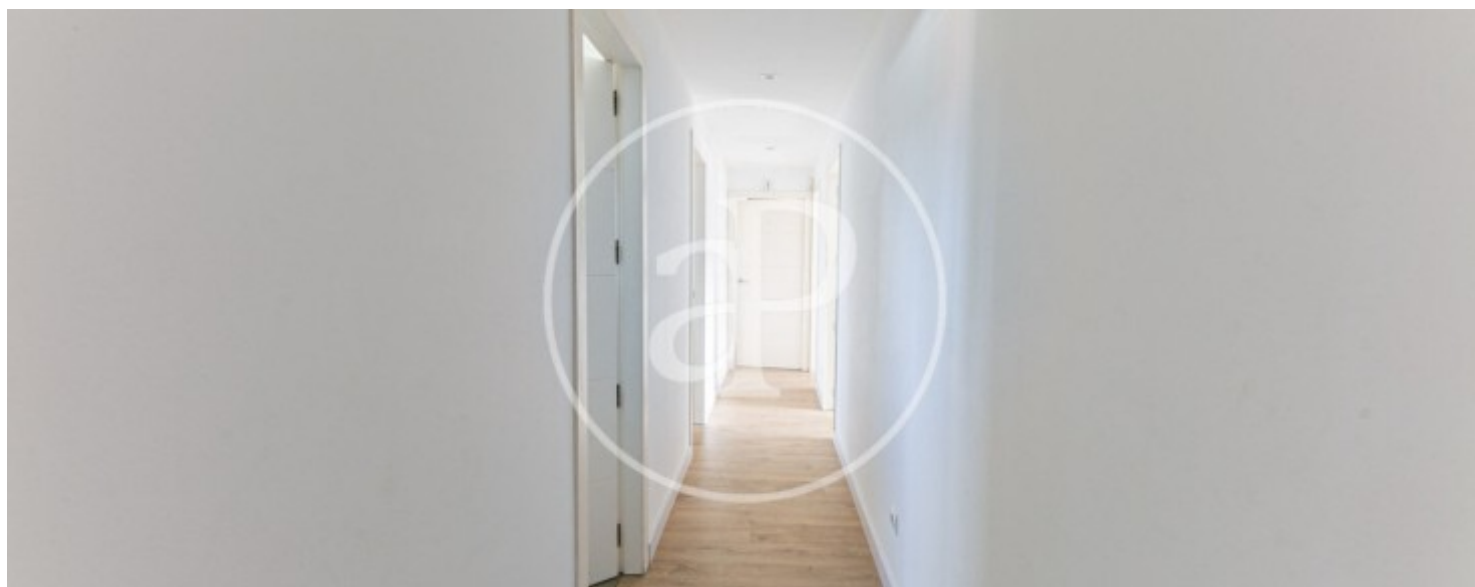
Es Garrovers, Marratxí

REF. VPM2401008



Es Garrovers, Marratxí

REF. VPM2401008



Es Garrovers, Marratxí

REF. VPM2401008



The information about any property is not binding to any offer or contract. Any verbal or written declaration made by aProperties with regards to the value or condition of the property should not be considered accurate or factual. The pictures make reference to some parts of the property at the times that they were taken. The areas, dimensions and distances that are given are approximate and should be checked by the client. The images are computer generated and are just an approximate indication of the real appearance of the property; these may change at any time. The information with regards to the property may also change at any time.

For **more information** or
to make an appointment

apropertiespalma@aproperties.es
Tel: 871 16 01 60
www.aproperties.es