

(Amanecer - S'Olivera)

Ref: ONPM2211001



New developments in Gaspar Bennazar

Complex of new build flats to be delivered in August 2023. Located in Av Gaspar Bennazar, within walking distance to the Red Cross, S'Escorxador, bullring and/or quick access to the ring road. This area is one of Palma's booming areas and has health centres, public and state-subsidised schools, shops of all kinds and restaurants. We find two typologies of flats, one with two bedrooms (one en suite) with two complete bathrooms and three bedrooms (one en suite) with two complete bathrooms, built-in wardrobes, heating and air conditioning, dining room with integrated kitchen and exit to the balcony and/or terrace. All units are exterior, with storage room and the formats E and F have the option to buy a parking space in the community (and 5B). In addition, they have a very modern and contemporary design, with lots of light and a high level of quality. Can you imagine living here? do not hesitate to contact us.

Palma de Mallorca /
Amanecer - S'Olivera
Unit 2 C
Completion Q2 2023

FEATURES

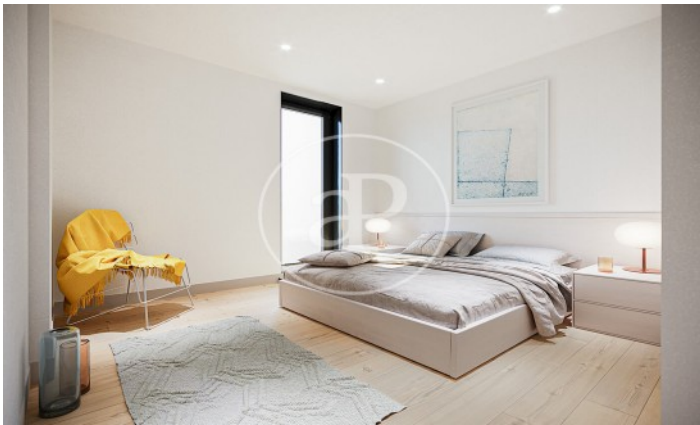
Surface 72 m²
2 Rooms
2 Toilets

- ✓ Views
- ✓ Heating
- ✓ Boxroom
- ✓ AACC
- ✓ Lift

Price 233,600 €

(Amanecer - S'Olivera)

Ref: ONPM2211001



The information about any property is not binding to any offer or contract. Any verbal or written declaration made by aProperties with regards to the value or condition of the property should not be considered accurate or factual. The pictures make reference to some parts of the property at the times that they were taken. The areas, dimensions and distances that are given are approximate and should be checked by the client. The images are computer generated and are just an approximate indication of the real appearance of the property; these may change at any time. The information with regards to the property may also change at any time.

Contact us today for more information or to arrange a viewing

Tel: 871 16 01 60

apropertiespalma@aproperties.es

<https://www.aproperties.es>