

(Foners)

Ref: ONPM2405001



New Developments for sale in Nou Llevant

In a newly expanding area of the city of Palma, just a few metres from the leisure and restaurant area of Portitxol. Exceptional architecture through a synchronicity of form, function, beauty and practicality, creating an emblematic landmark. The layout and design of the flats maximises natural light through glazed walls, integrating an indoor-outdoor concept creating open spaces with electric panoramic windows, opening onto elegant private balconies, beautiful gardens and roof terraces with panoramic views. The development features flats and pent-houses ranging from 90 sqm to 423 sqm in size, with a choice of three different interior design lines. Contemporary and fully equipped kitchens with state-of-the-art technologies. The pent-houses benefit from spectacular private terraces equipped with swimming pool or Jacuzzi, and barbecue areas with lush vegetation, designed with privacy in mind. In the flats, special atmospheres provide carefully designed spaces brimming with character. Integral designs with glass walls that maximise natural light complemented by state-of-the-art technologies for living, entertaining or simply relaxing. Communal facilities include an intelli [...]

Palma de Mallorca / Foners

Unit 1 Q

Completion Q2 2024

FEATURES

Surface 0 m² / 41 m² terrace

2 Rooms

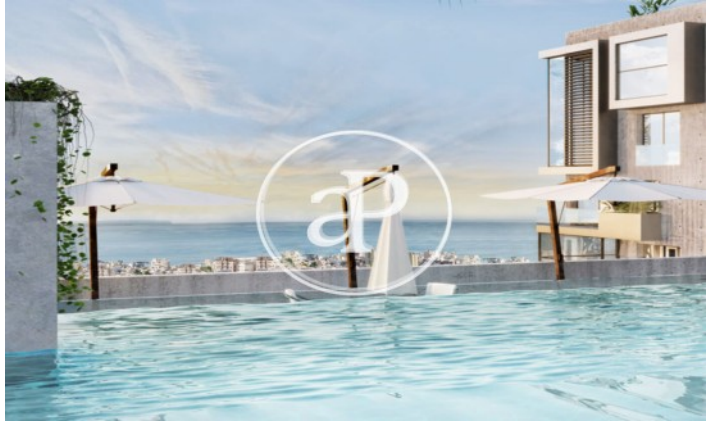
2 Toilets

- ✓ Heating
- ✓ Boxroom
- ✓ AACC
- ✓ Terrace
- ✓ Backyard
- ✓ Pool
- ✓ Gym
- ✓ Lift
- ✓ Security
- ✓ Concierge
- ✓ Has parking

Price 1,200,000 €

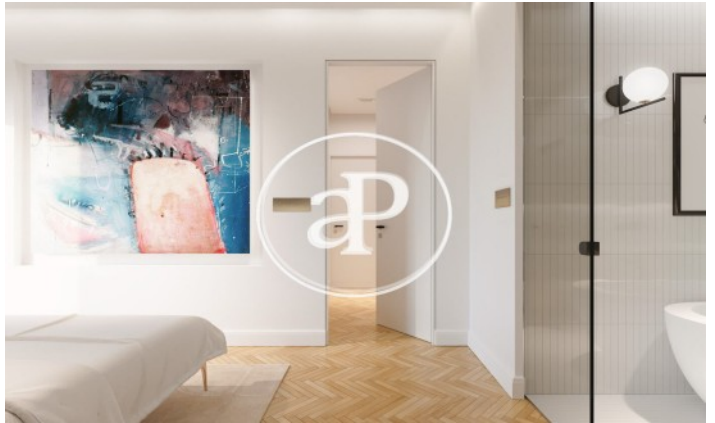
(Foners)

Ref: ONPM2405001



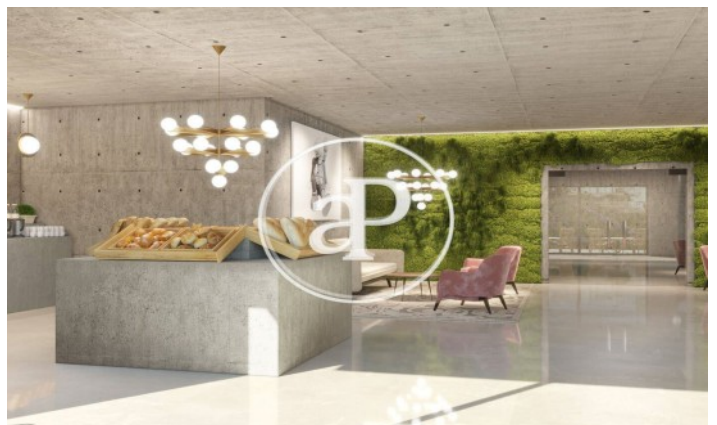
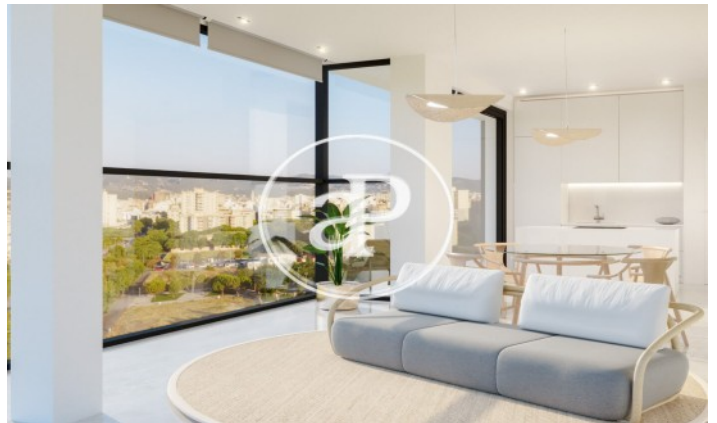
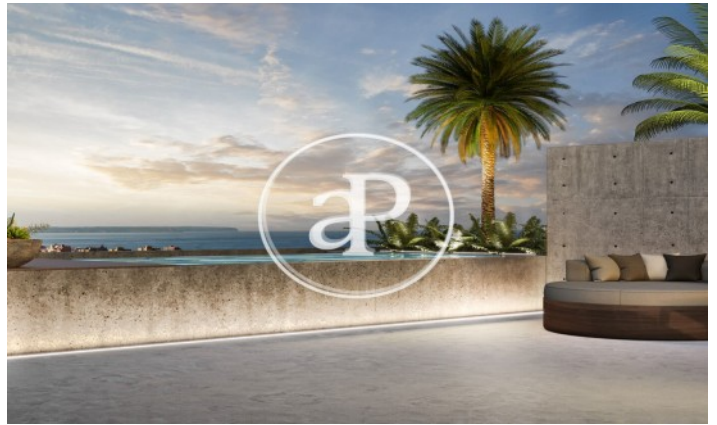
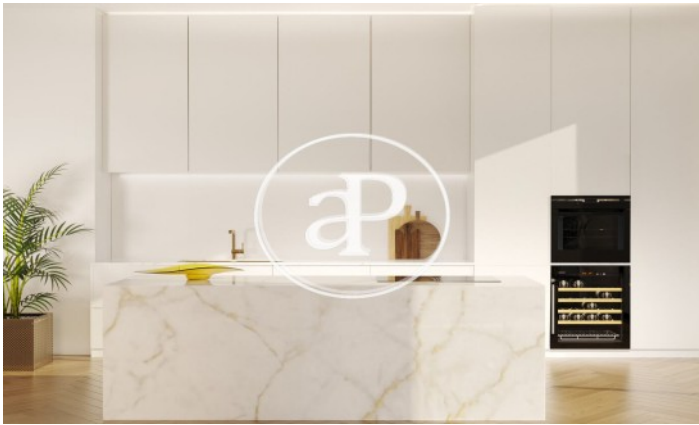
(Foners)

Ref: ONPM2405001



(Foners)

Ref: ONPM2405001



The information about any property is not binding to any offer or contract. Any verbal or written declaration made by aProperties with regards to the value or condition of the property should not be considered accurate or factual. The pictures make reference to some parts of the property at the times that they were taken. The areas, dimensions and distances that are given are approximate and should be checked by the client. The images are computer generated and are just an approximate indication of the real appearance of the property; these may change at any time. The information with regards to the property may also change at any time.

Contact us today for more information or to arrange a viewing

Tel: 871 16 01 60

apropertiespalma@aproperties.es

<https://www.aproperties.es>