

(Polígono de Levante (Nou Llevant))

Ref: ONPM2306002



New luxury residential development in Nou Llevant

Following the completion of the first phase XOJAY Residences in the emerging and vibrant Nou Llevant area, the same developer presents the next phase - XO Parq, a luxury residential project located directly opposite the Parc de Can Palou. The location is key - just a few metres from the bay of Es Portixolet, with direct access to the sunny port of Portixol and thanks to its proximity to the centre of Palma, residents will enjoy the wide range of culture, gastronomy, entertainment and resorts that this splendid city and the island have to offer. XO Parq has been designed with large open spaces and a strong emphasis on sensoriality. A collection of 65 housing typologies distributed in three independent four-storey blocks with underground parking. Homes of all sizes, from one bedroom to three bedrooms, duplexes and penthouses. Flexible spaces, environmentally friendly materials and engineering, unexpected elements that enhance everyday life. Spacious and carefully designed common areas: lounge, spa, gym, lobby porter, cinema, infinity pool. Sustainable building both in the use of materials and in the construction process: solar energy in all spaces, rainwater collection an [...]

Palma de Mallorca /
Polígono de Levante (Nou Llevant)

Unit 2 O
Completion Q4 2025

FEATURES

Surface 62 m² / 9 m² terrace
1 Rooms
1 Toilets

- ✓ Views
- ✓ Heating
- ✓ Boxroom
- ✓ AACC
- ✓ Terrace
- ✓ Backyard
- ✓ Pool
- ✓ Gym
- ✓ Lift
- ✓ Security
- ✓ Concierge
- ✓ Has parking

Price 650,000 €

(Polígono de Levante (Nou Llevant))

Ref: ONPM2306002



XOJAY



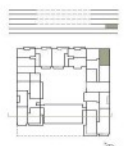
DESCRIPCIÓ	
Superfície útil	100,00 m ²
Superfície construïda	100,00 m ²
Superfície de coberta	100,00 m ²
Superfície de soterrani	0,00 m ²
Superfície total	100,00 m ²

APARTAMENT 1.I

XOPARQ CW
The Palma Residences

XOPARQ
The Palma Residences

XOJAY



DESCRIPCIÓ	
Superfície útil	100,00 m ²
Superfície construïda	100,00 m ²
Superfície de coberta	100,00 m ²
Superfície de soterrani	0,00 m ²
Superfície total	100,00 m ²

APARTAMENT 1.H

XOPARQ CW
The Palma Residences

XOPARQ
The Palma Residences

XOJAY



DESCRIPCIÓ	
Superfície útil	100,00 m ²
Superfície construïda	100,00 m ²
Superfície de coberta	100,00 m ²
Superfície de soterrani	0,00 m ²
Superfície total	100,00 m ²

APARTAMENT 1.G

XOPARQ CW
The Palma Residences

XOPARQ
The Palma Residences

XOJAY



DESCRIPCIÓ	
Superfície útil	100,00 m ²
Superfície construïda	100,00 m ²
Superfície de coberta	100,00 m ²
Superfície de soterrani	0,00 m ²
Superfície total	100,00 m ²

APARTAMENT 1.E

XOPARQ CW
The Palma Residences

XOPARQ
The Palma Residences

XOJAY



DESCRIPCIÓ	
Superfície útil	100,00 m ²
Superfície construïda	100,00 m ²
Superfície de coberta	100,00 m ²
Superfície de soterrani	0,00 m ²
Superfície total	100,00 m ²

APARTAMENT 1.B

XOPARQ CW
The Palma Residences

XOPARQ
The Palma Residences

XOJAY



DESCRIPCIÓ	
Superfície útil	100,00 m ²
Superfície construïda	100,00 m ²
Superfície de coberta	100,00 m ²
Superfície de soterrani	0,00 m ²
Superfície total	100,00 m ²

APARTAMENT 1.A

XOPARQ CW
The Palma Residences

XOPARQ
The Palma Residences

(Polígono de Levante (Nou Llevant))

Ref: ONPM2306002

XOJAY



PLANO DE DISTRIBUCIÓN



DETALLE DE LA PLANTA

DESCRIPCIÓN	VALOR
Superficie construida	115,00 m ²
Superficie útil	95,00 m ²
Superficie cubierta	10,00 m ²
Superficie exterior	0,00 m ²
Superficie interior	0,00 m ²
Superficie de terraza	0,00 m ²
Superficie de jardín	0,00 m ²
Superficie de piscina	0,00 m ²
Superficie de garaje	0,00 m ²
Superficie de parking	0,00 m ²
Superficie de almacenamiento	0,00 m ²
Superficie de otros usos	0,00 m ²

XOPARQ CW
The Palma Residences

XOPARQ
The Palma Residences

APARTAMENT 3.R

The information about any property is not binding to any offer or contract. Any verbal or written declaration made by aProperties with regards to the value or condition of the property should not be considered accurate or factual. The pictures make reference to some parts of the property at the times that they were taken. The areas, dimensions and distances that are given are approximate and should be checked by the client. The images are computer generated and are just an approximate indication of the real appearance of the property; these may change at any time. The information with regards to the property may also change at any time.

Contact us today for more information or to arrange a viewing

Tel: 871 16 01 60

apropertiespalma@aproperties.es

<https://www.aproperties.es>