

(Polígono de Levante (Nou Llevant))

Ref: ONPM2306002



## *New luxury residential development in Nou Llevant*

Following the completion of the first phase XOJAY Residences in the emerging and vibrant Nou Llevant area, the same developer presents the next phase - XO Parq, a luxury residential project located directly opposite the Parc de Can Palou. The location is key - just a few metres from the bay of Es Portixolet, with direct access to the sunny port of Portixol and thanks to its proximity to the centre of Palma, residents will enjoy the wide range of culture, gastronomy, entertainment and resorts that this splendid city and the island have to offer. XO Parq has been designed with large open spaces and a strong emphasis on sensoriality. A collection of 65 housing typologies distributed in three independent four-storey blocks with underground parking. Homes of all sizes, from one bedroom to three bedrooms, duplexes and penthouses. Flexible spaces, environmentally friendly materials and engineering, unexpected elements that enhance everyday life. Spacious and carefully designed common areas: lounge, spa, gym, lobby porter, cinema, infinity pool. Sustainable building both in the use of materials and in the construction process: solar energy in all spaces, rainwater collection an [...]

Palma de Mallorca /  
Polígono de Levante (Nou Llevant)

Unit 3 U  
Completion Q4 2025

### FEATURES

Surface 93 m<sup>2</sup> / 30 m<sup>2</sup> terrace  
2 Rooms  
2 Toilets

- ✓ Views
- ✓ Heating
- ✓ Boxroom
- ✓ AACC
- ✓ Terrace
- ✓ Backyard
- ✓ Pool
- ✓ Gym
- ✓ Lift
- ✓ Security
- ✓ Concierge
- ✓ Has parking

Price 1,200,000 €

(Polígono de Levante (Nou Llevant))

Ref: ONPM2306002



(Polígono de Levante (Nou Llevant))

Ref: ONPM2306002

XOJAY



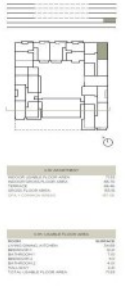
APARTAMENT	
Superfície útil	102,00 m <sup>2</sup>
Superfície construïda	102,00 m <sup>2</sup>
Superfície de coberta	102,00 m <sup>2</sup>
Superfície de soterrani	0,00 m <sup>2</sup>
Superfície total	102,00 m <sup>2</sup>

XOPARQ CW  
 102,00 m<sup>2</sup>  
 102,00 m<sup>2</sup>  
 102,00 m<sup>2</sup>  
 0,00 m<sup>2</sup>  
 102,00 m<sup>2</sup>

**XOPARQ**  
The Palma Residences

APARTAMENT 1.I

XOJAY



APARTAMENT	
Superfície útil	102,00 m <sup>2</sup>
Superfície construïda	102,00 m <sup>2</sup>
Superfície de coberta	102,00 m <sup>2</sup>
Superfície de soterrani	0,00 m <sup>2</sup>
Superfície total	102,00 m <sup>2</sup>

XOPARQ CW  
 102,00 m<sup>2</sup>  
 102,00 m<sup>2</sup>  
 102,00 m<sup>2</sup>  
 0,00 m<sup>2</sup>  
 102,00 m<sup>2</sup>

**XOPARQ**  
The Palma Residences

APARTAMENT 1.H

XOJAY



APARTAMENT	
Superfície útil	102,00 m <sup>2</sup>
Superfície construïda	102,00 m <sup>2</sup>
Superfície de coberta	102,00 m <sup>2</sup>
Superfície de soterrani	0,00 m <sup>2</sup>
Superfície total	102,00 m <sup>2</sup>

XOPARQ CW  
 102,00 m<sup>2</sup>  
 102,00 m<sup>2</sup>  
 102,00 m<sup>2</sup>  
 0,00 m<sup>2</sup>  
 102,00 m<sup>2</sup>

**XOPARQ**  
The Palma Residences

APARTAMENT 1.G

XOJAY



APARTAMENT	
Superfície útil	102,00 m <sup>2</sup>
Superfície construïda	102,00 m <sup>2</sup>
Superfície de coberta	102,00 m <sup>2</sup>
Superfície de soterrani	0,00 m <sup>2</sup>
Superfície total	102,00 m <sup>2</sup>

XOPARQ CW  
 102,00 m<sup>2</sup>  
 102,00 m<sup>2</sup>  
 102,00 m<sup>2</sup>  
 0,00 m<sup>2</sup>  
 102,00 m<sup>2</sup>

**XOPARQ**  
The Palma Residences

APARTAMENT 1.E

XOJAY



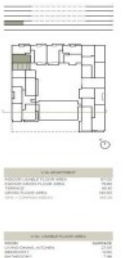
APARTAMENT	
Superfície útil	102,00 m <sup>2</sup>
Superfície construïda	102,00 m <sup>2</sup>
Superfície de coberta	102,00 m <sup>2</sup>
Superfície de soterrani	0,00 m <sup>2</sup>
Superfície total	102,00 m <sup>2</sup>

XOPARQ CW  
 102,00 m<sup>2</sup>  
 102,00 m<sup>2</sup>  
 102,00 m<sup>2</sup>  
 0,00 m<sup>2</sup>  
 102,00 m<sup>2</sup>

**XOPARQ**  
The Palma Residences

APARTAMENT 1.B

XOJAY



APARTAMENT	
Superfície útil	102,00 m <sup>2</sup>
Superfície construïda	102,00 m <sup>2</sup>
Superfície de coberta	102,00 m <sup>2</sup>
Superfície de soterrani	0,00 m <sup>2</sup>
Superfície total	102,00 m <sup>2</sup>

XOPARQ CW  
 102,00 m<sup>2</sup>  
 102,00 m<sup>2</sup>  
 102,00 m<sup>2</sup>  
 0,00 m<sup>2</sup>  
 102,00 m<sup>2</sup>

**XOPARQ**  
The Palma Residences

APARTAMENT 1.A

(Polígono de Levante (Nou Llevant))

Ref: ONPM2306002

XOJAY



CARACTERÍSTICAS	
Superficie construida	100,00 m <sup>2</sup>
Superficie útil	80,00 m <sup>2</sup>
Planta	3.R
Tipología	3 Dormitorios
Garaje	1
Comedor	1
Baño	1
W.C.	1
Alcoba	3
Salón	1
Cocina	1
Trastero	1
Armario	1
Planta	3.R
Tipología	3 Dormitorios
Garaje	1
Comedor	1
Baño	1
W.C.	1
Alcoba	3
Salón	1
Cocina	1
Trastero	1
Armario	1

**XOPARQ CW**  
The Palma Residences

**XOPARQ**  
The Palma Residences

APARTAMENT 3.R

The information about any property is not binding to any offer or contract. Any verbal or written declaration made by aProperties with regards to the value or condition of the property should not be considered accurate or factual. The pictures make reference to some parts of the property at the times that they were taken. The areas, dimensions and distances that are given are approximate and should be checked by the client. The images are computer generated and are just an approximate indication of the real appearance of the property; these may change at any time. The information with regards to the property may also change at any time.

Contact us today for more information or to arrange a viewing

Tel: 871 16 01 60

[apropertiespalma@aproperties.es](mailto:apropertiespalma@aproperties.es)

<https://www.aproperties.es>