

(Son Armadams)

Ref: ONPM2306004



New build flats for sale in Son Armadams

These beautiful new-build flats, located in Son Armadams, offer a unique opportunity to live in one of the most sought-after areas of Palma. It is a high-end construction project, which has excellent facilities such as swimming pool, parking, terraces and rooftops that provide comfort and luxury. The homes stand out for their great luminosity, spacious terraces and modern, minimalist finishes. All the details have been carefully designed to offer a functional and elegant space. Each unit includes two bedrooms, two full bathrooms, and a spacious living and dining room that integrates perfectly with a fully equipped kitchen. Available before the end of the year, these flats are located in a trendy area, with all amenities within easy reach. In addition, they offer sea views and are within walking distance to the centre of Palma, guaranteeing excellent connections to all that the city has to offer. They are also only 15 minutes from the airport, making them an ideal option for both residents and those looking for a second home. Don't miss out on the opportunity to live in these wonderful surroundings. We look forward to hearing from you!

Palma de Mallorca / Son Armadams

Unit 4 A

Completion Q2 2023

FEATURES

Surface 160 m² / 86 m² terrace

2 Rooms

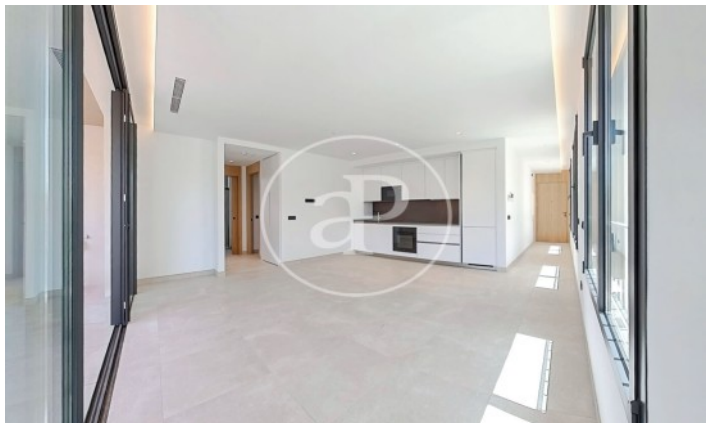
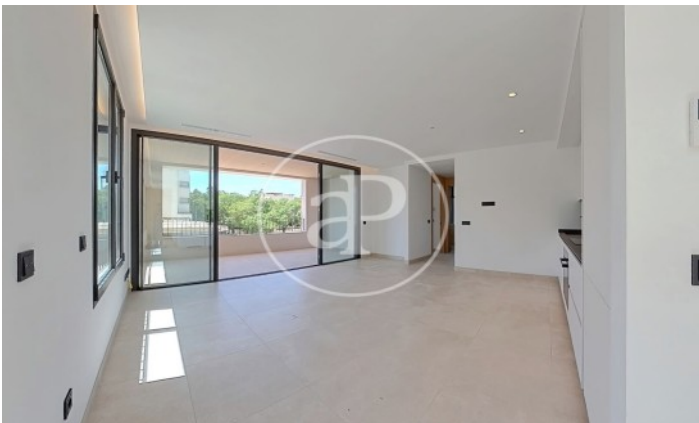
2 Toilets

- ✓ Views
- ✓ Heating
- ✓ Boxroom
- ✓ AACC
- ✓ Terrace
- ✓ Backyard
- ✓ Pool
- ✓ Lift
- ✓ Has parking

Price 1,420,000 €

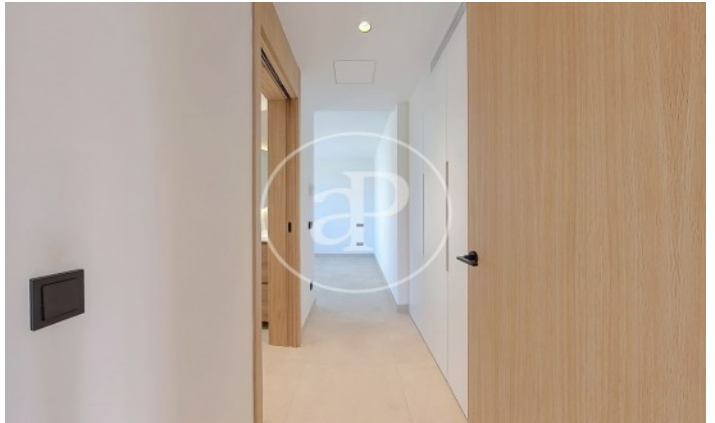
(Son Armadams)

Ref: ONPM2306004



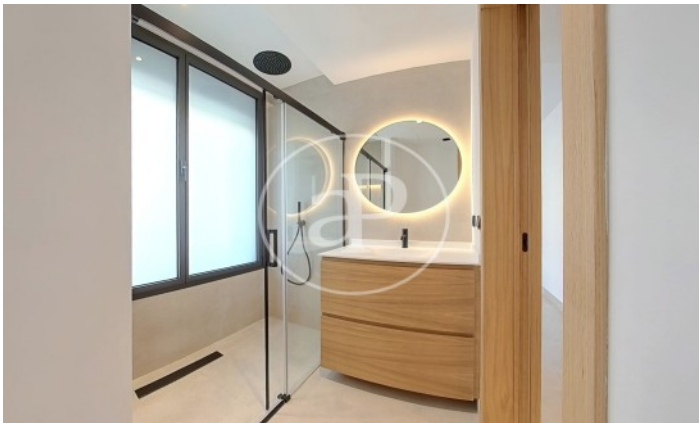
(Son Armadams)

Ref: ONPM2306004



(Son Armadams)

Ref: ONPM2306004



The information about any property is not binding to any offer or contract. Any verbal or written declaration made by aProperties with regards to the value or condition of the property should not be considered accurate or factual. The pictures make reference to some parts of the property at the times that they were taken. The areas, dimensions and distances that are given are approximate and should be checked by the client. The images are computer generated and are just an approximate indication of the real appearance of the property; these may change at any time. The information with regards to the property may also change at any time.

Contact us today for more information or to arrange a viewing

Tel: 871 16 01 60

apropertiespalma@aproperties.es

<https://www.aproperties.es>