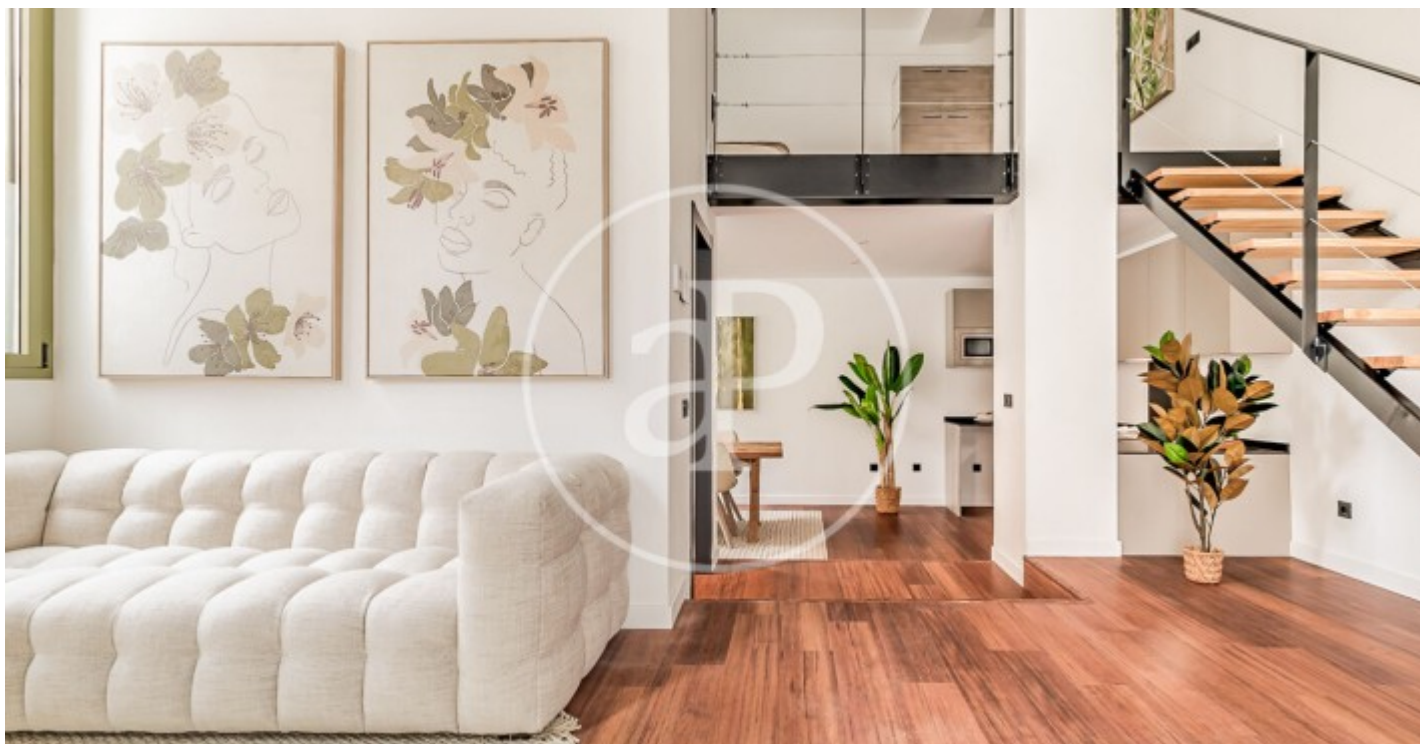


(Ventas)

Ref: ONM2401002



New build lofts for residential use in Ventas.

Discover this unique development comprising a total of 16 LOFT type homes for RESIDENTIAL USE, located in the Ventas neighbourhood, next to calle Alcalá and El Carmen metro station. The project is recently completed, so it is for immediate delivery. You will find homes full of light and space, all exterior, each with independent access from the street, with double-height living rooms, large integrated kitchens and large windows overlooking the street. All homes have 2 complete bathrooms. Living in a loft is the exact definition of living in a completely open space, without walls, corridors or doors that limit your space and your way of life. With great freedom to adapt the spaces to every moment of your life according to your needs. Can you imagine living here?

Ciudad Lineal / Ventas

Unit bj 15

Completion Q1 2024

FEATURES

Surface 58 m²

2 Rooms

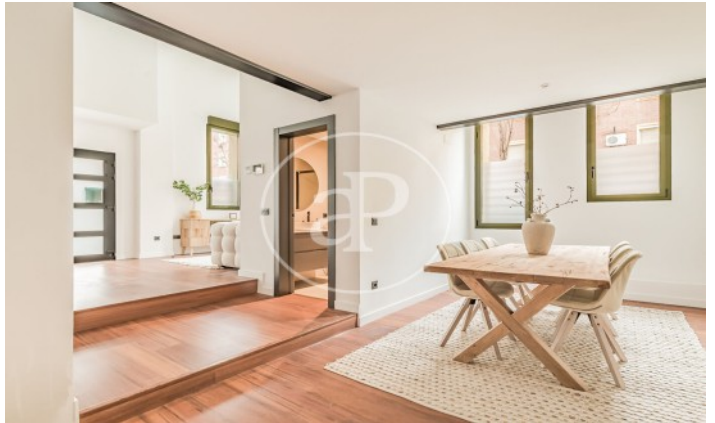
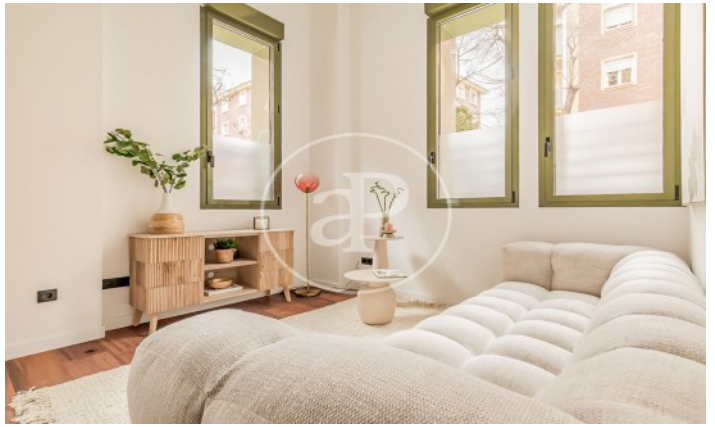
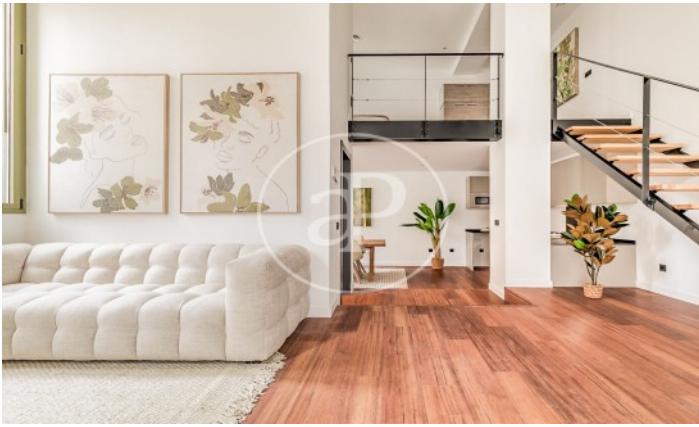
2 Toilets

- ✓ Heating
- ✓ Boxroom

Price 395,000 €

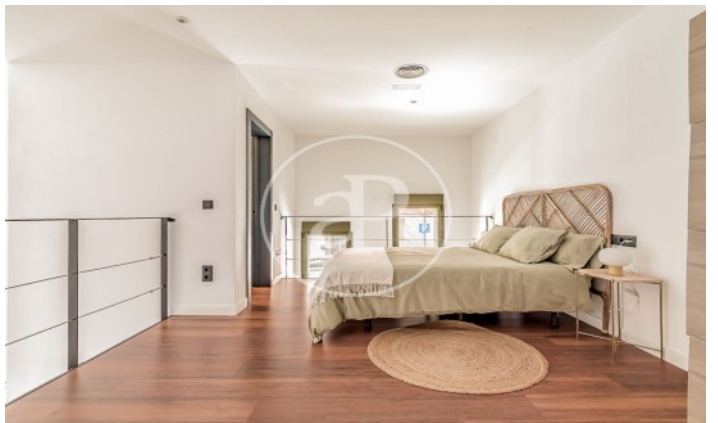
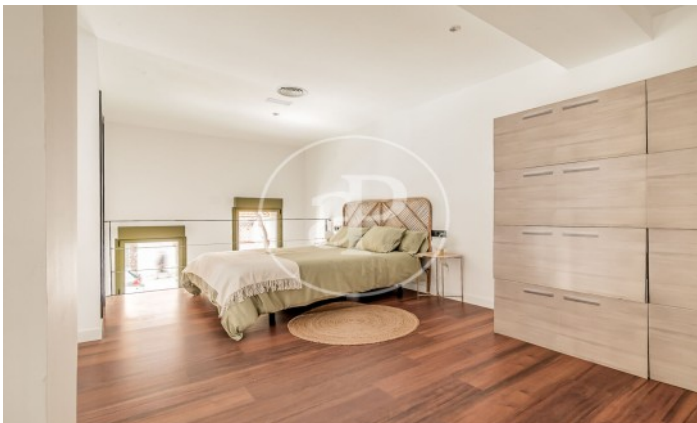
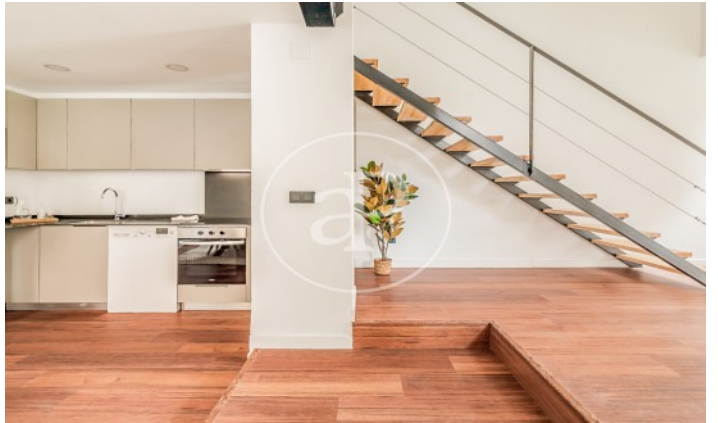
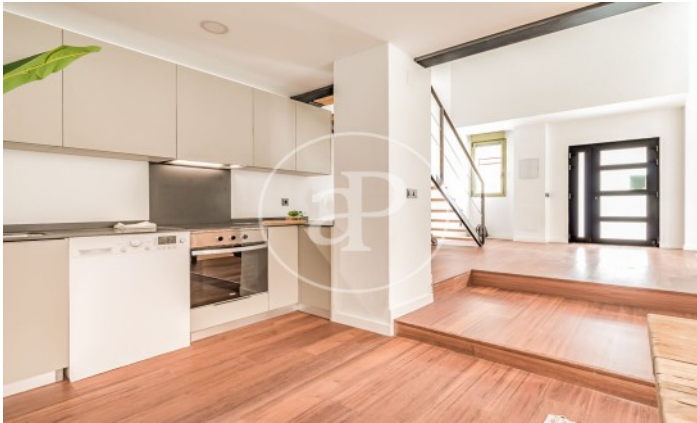
(Ventas)

Ref: ONM2401002



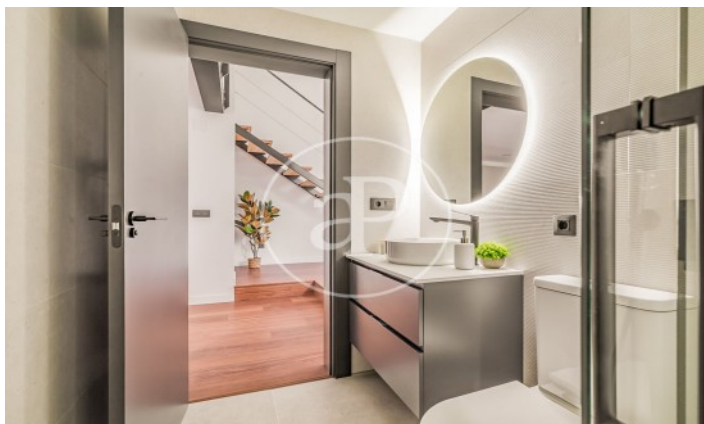
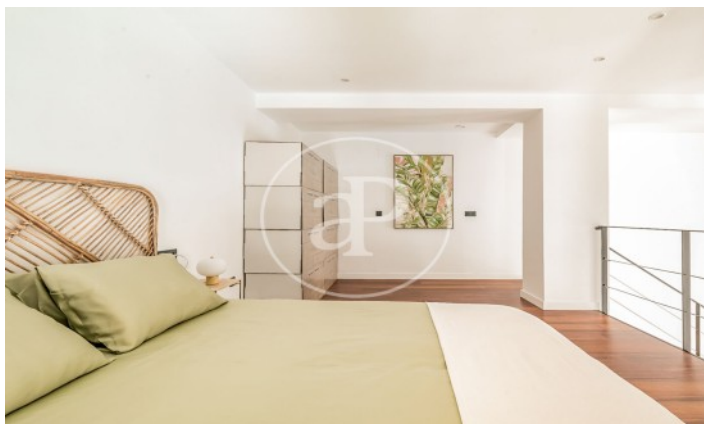
(Ventas)

Ref: ONM2401002



(Ventas)

Ref: ONM2401002



The information about any property is not binding to any offer or contract. Any verbal or written declaration made by aProperties with regards to the value or condition of the property should not be considered accurate or factual. The pictures make reference to some parts of the property at the times that they were taken. The areas, dimensions and distances that are given are approximate and should be checked by the client. The images are computer generated and are just an approximate indication of the real appearance of the property; these may change at any time. The information with regards to the property may also change at any time.

Contact us today for more information or to arrange a viewing

Tel: 91 800 54 65

apropertiesmadrid@aproperties.es

<https://www.aproperties.es>